








# Phasing and Practical Completion dates

Phasing and Practical Completion Key:

-  Phase 1  
Expected PC May 2024
-  Phase 2  
Expected PC 2027
-  Phase 3  
Expected PC 2029

B1-Kenilworth Mansions

B2-Hyde Mansions

B3-Balwick Mansions

B4-Cambridge Mansions

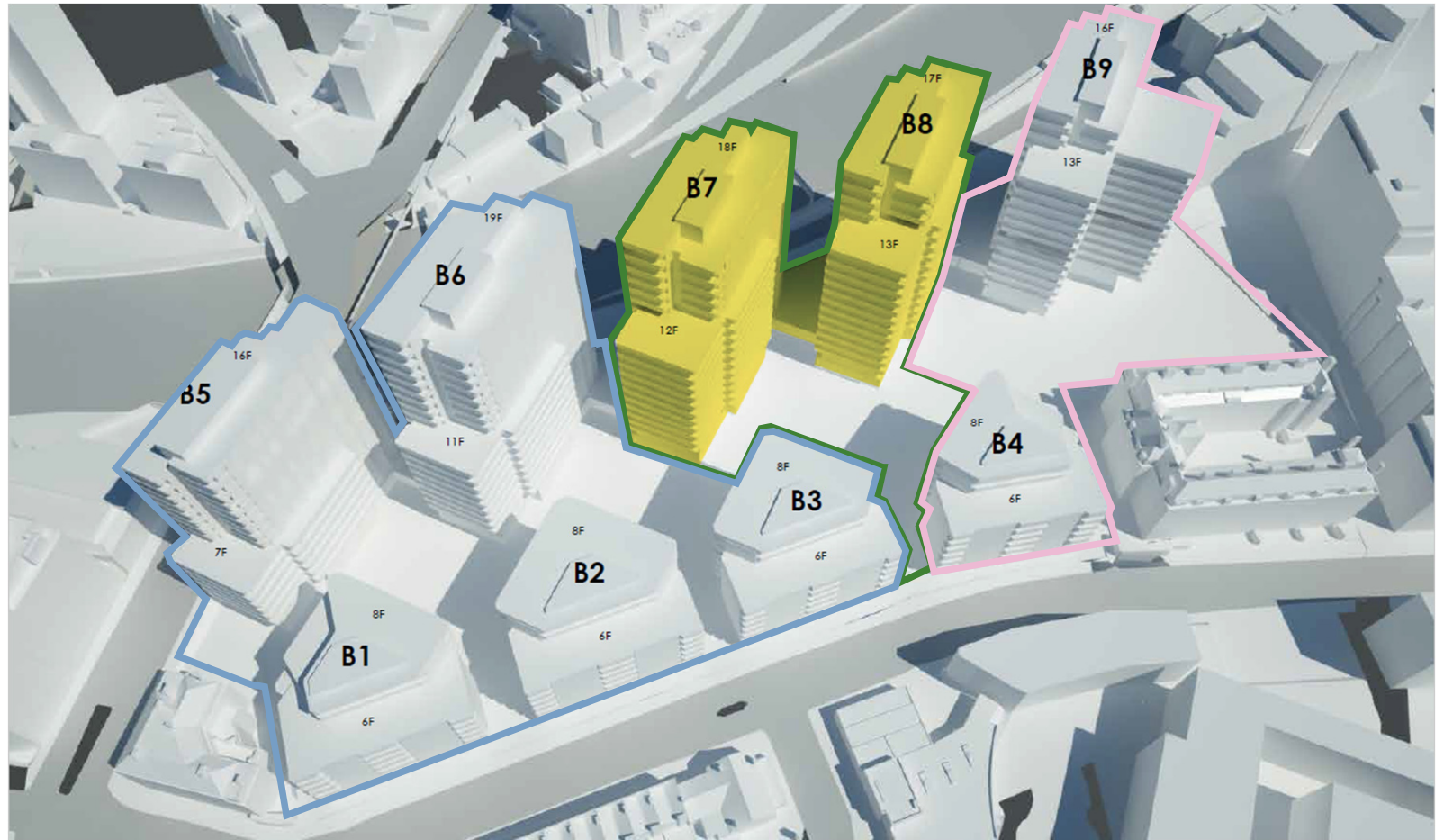
B5-Clement Apartments

B6-Holmes Apartments

B7-Sutherland Apartments

B8-Mandeville Apartments

B9-Fleming Apartments








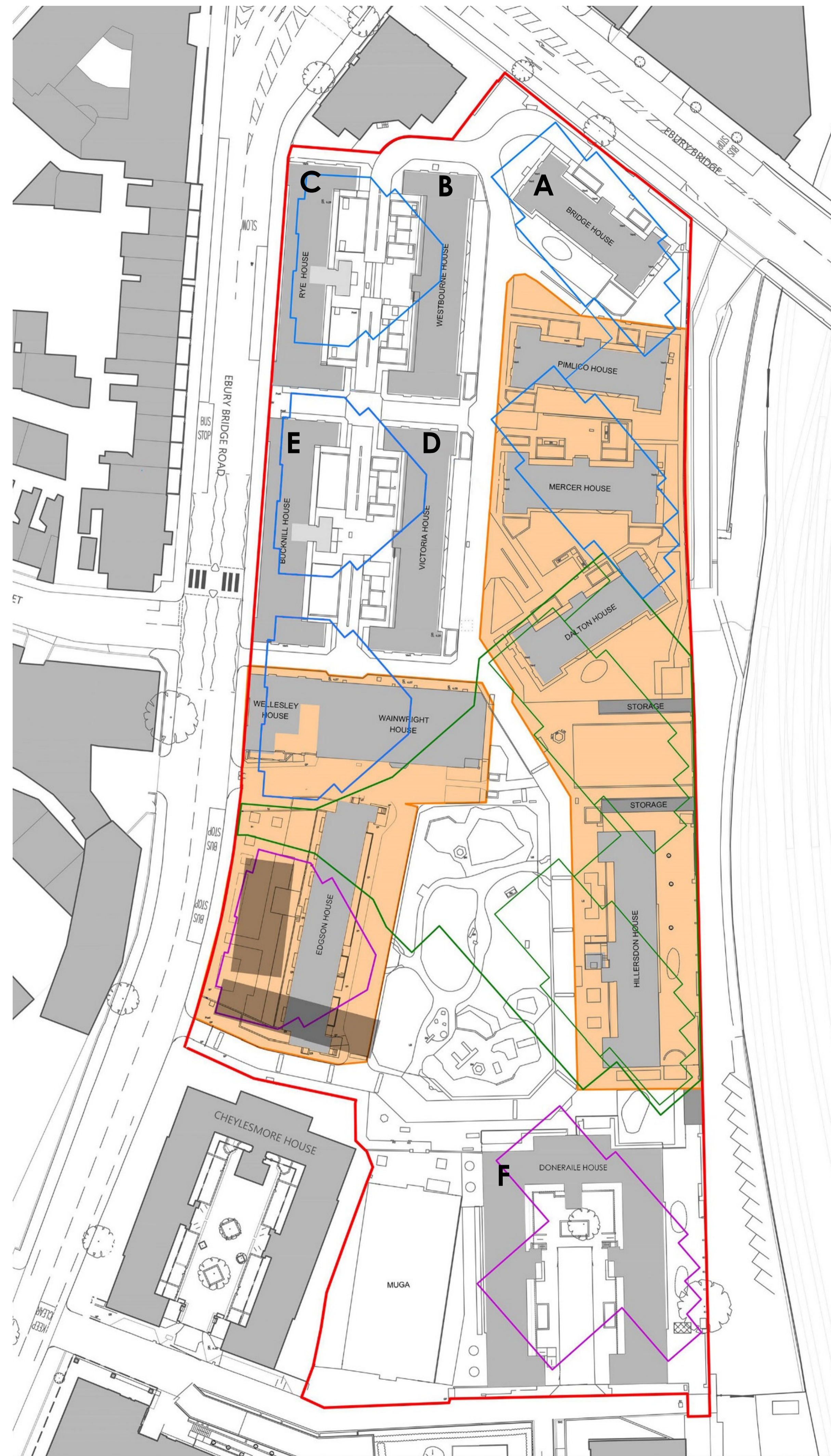


# Phasing and Vacant Possession dates

Vacant possession  
Key:

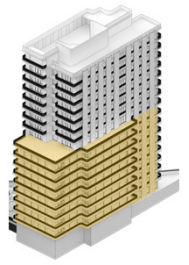
- A. Bridge House VP May 2023
- B. Westbourne House VP May 2023
- C. Rye House VP May 2023
- D. Victoria House VP May 2023
- E. Bucknill House VP May 2024
- F. Doneraile House VP 2026/27

-  Demolished buildings
-  Phase 1
-  Phase 2
-  Phase 3
-  Ebury Edge



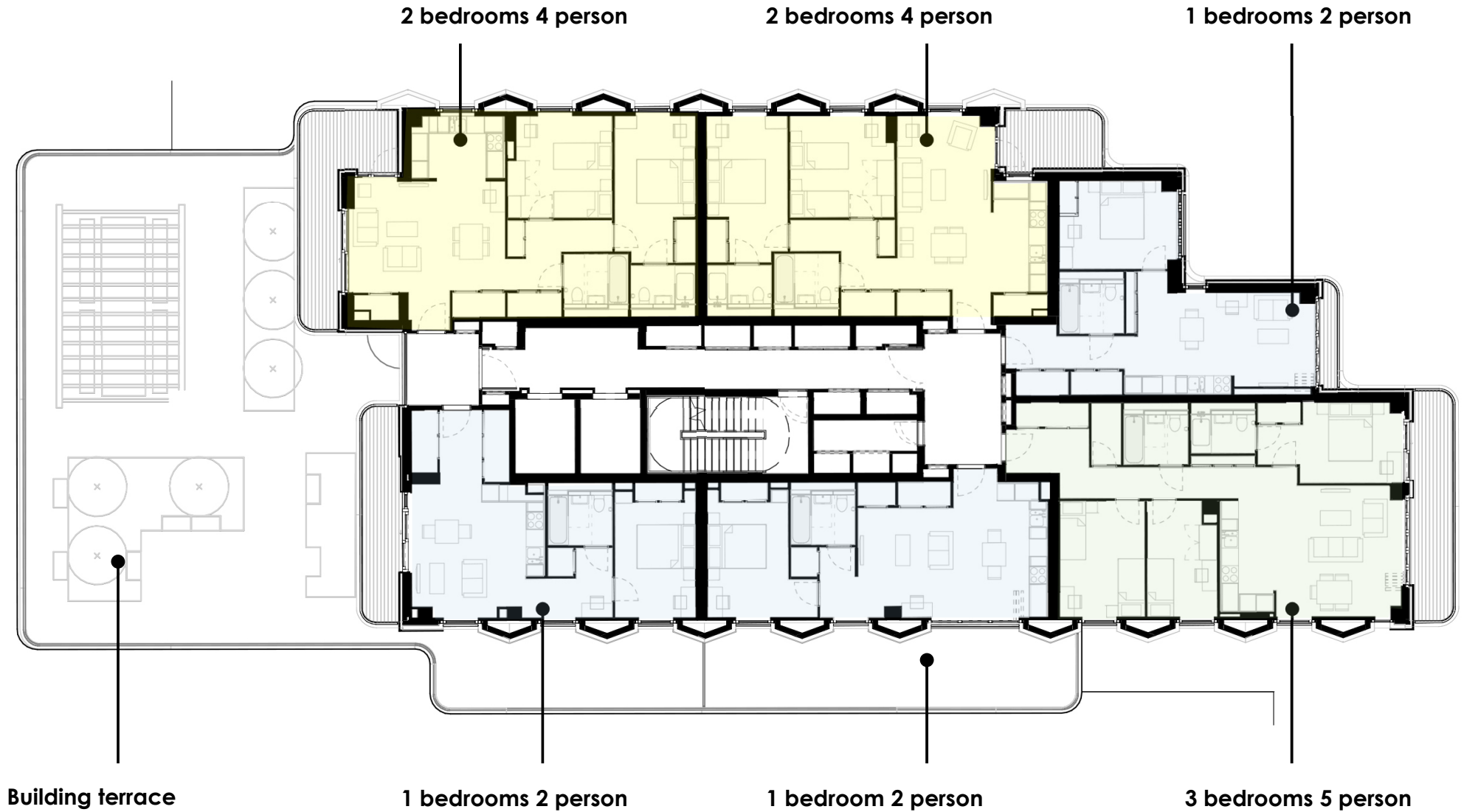
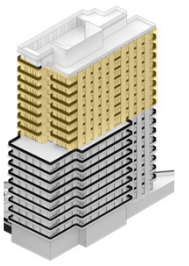


# Phase 1 - Typical lower floor homes layout B7/B8



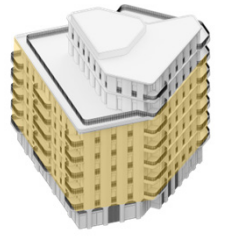


# Phase 1 - Typical upper floor homes layout B7/B8





# Phase 2 - Typical floor homes layout B1



2 bedrooms  
4 person

2 bedrooms  
4 person

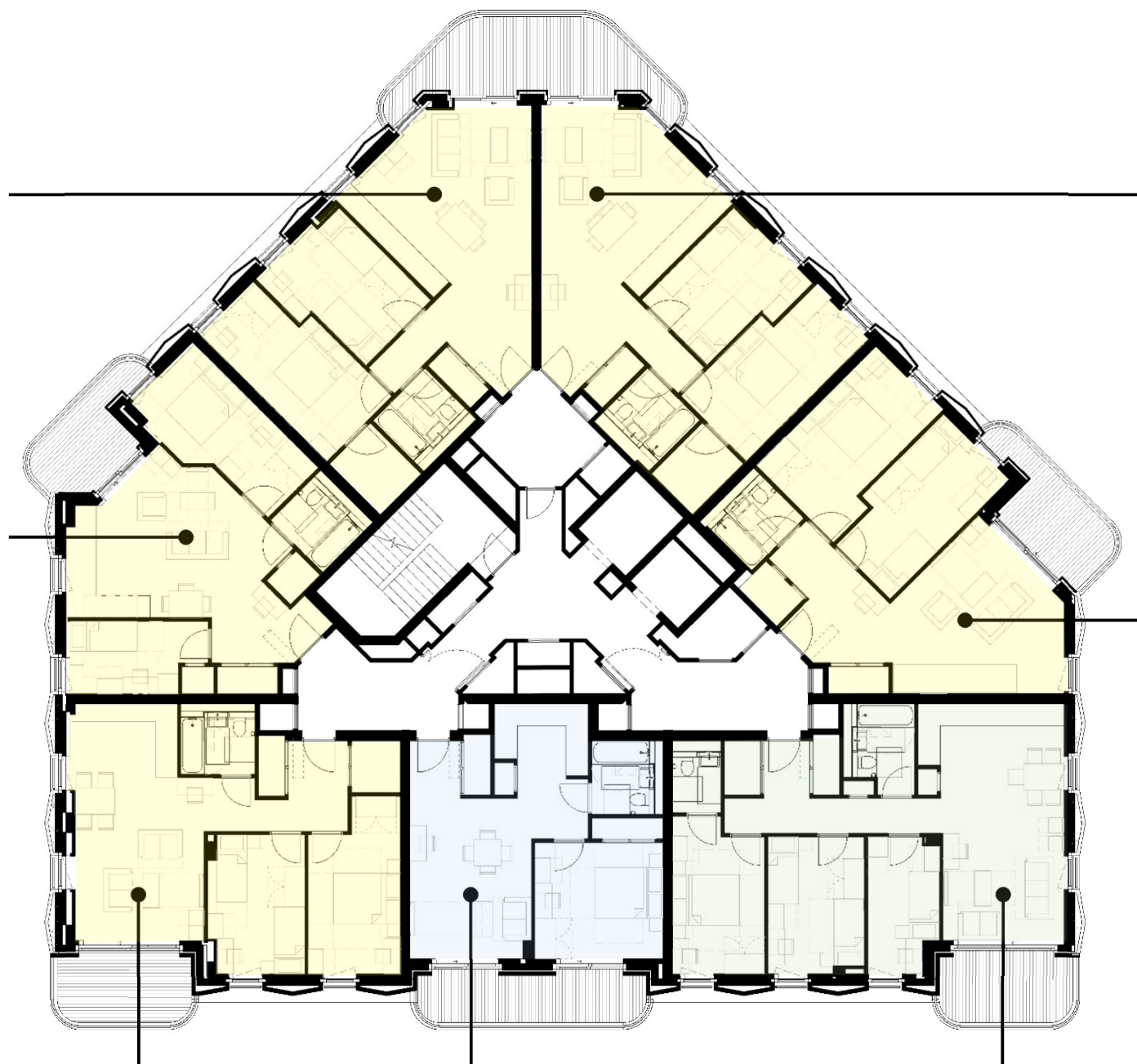
2 bedrooms  
3 person

2 bedrooms  
4 person

2 bedrooms 2 person

1 bedroom 2 person

3 bedrooms 5 person

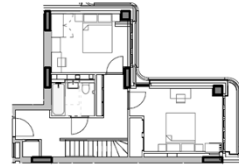
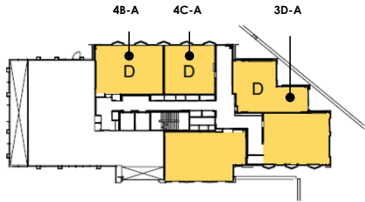




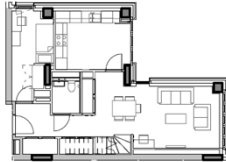
# Phase 1 - Duplex homes layout B7/B8

## Building 7

Level 1 (Podium Level)

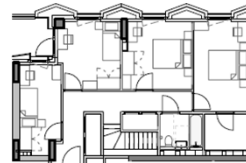


Upper floor

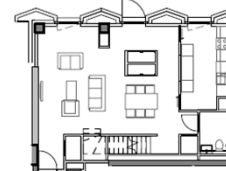


Lower floor

**3D-A**  
3 bedroom  
5 persons  
B7 1stF & 2ndF

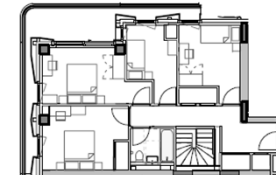


Upper floor

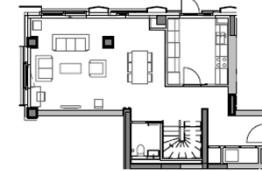


Lower floor

**4B-A**  
4 bedroom  
6 persons  
B7 1stF & 2ndF



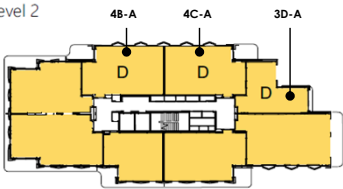
Upper floor



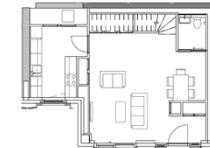
Lower floor

**4D-A**  
4 bedroom  
6 persons  
B8 1stF & 2ndF

Level 2

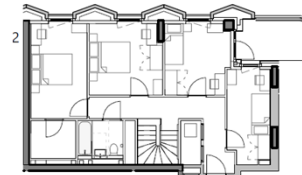


Upper floor



Lower floor

**3C-A**  
3 bedroom  
5 persons  
B8 GF & 1stF

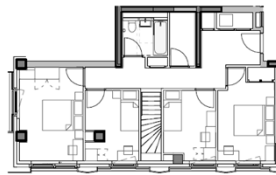


Upper floor



Lower floor

**4C-A**  
4 bedroom  
6 persons  
B7 & B8 1stF  
& 2ndF



Upper floor

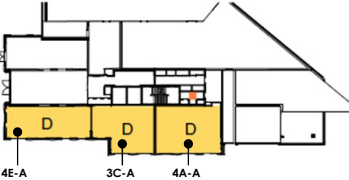


Lower floor

**4E-A**  
4 bedroom  
6 persons  
B8 GF & 1stF

## Building 8

Level 0 (Ground)

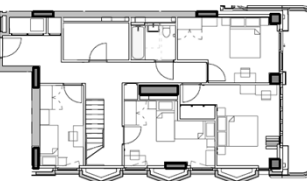


Upper floor

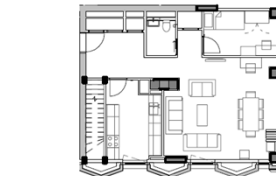


Lower floor

**4A-A**  
4 bedroom  
7 persons  
B8 GF & 1stF



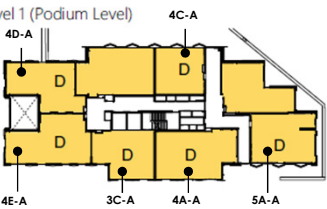
Upper floor



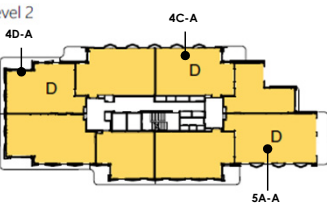
Lower floor

**5A-A**  
5 bedroom  
8 persons  
B8 1stF & 2ndF

Level 1 (Podium Level)

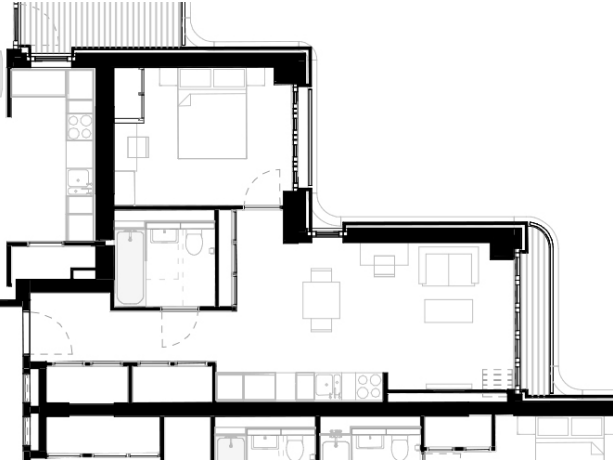


Level 2

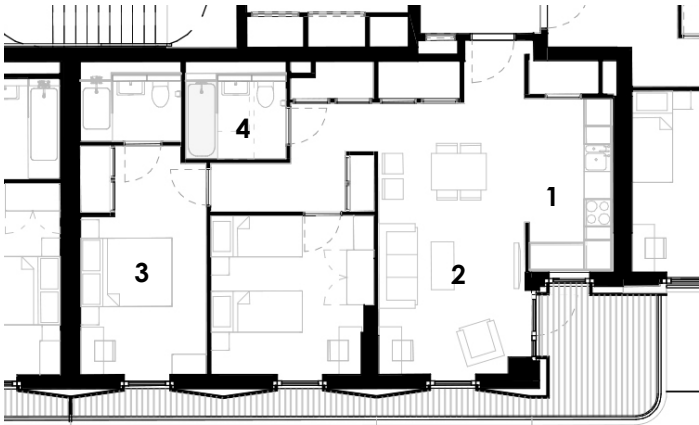




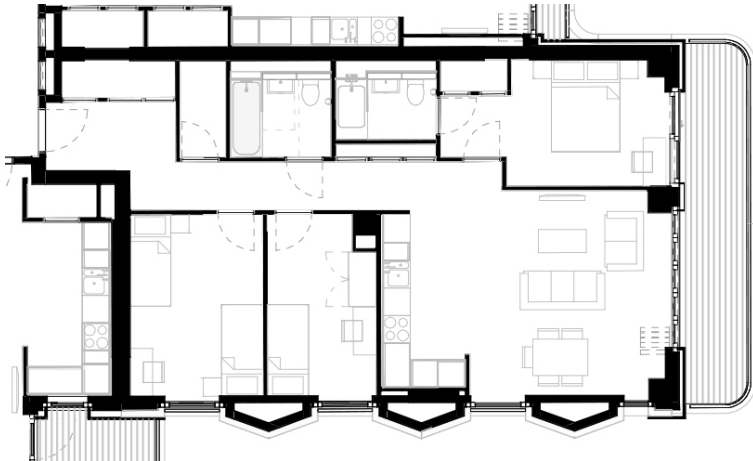
# Typical homes layout



1 bedrooms 2 person



2 bedrooms 4 person



3 bedrooms 5 person

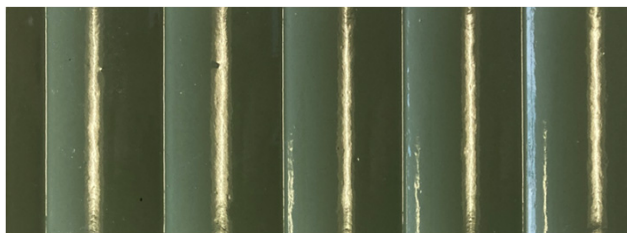
# Look and feel



Artistic illustrations: Kitchen, living, bedroom, WC and bath



# Entrance and Lobby artistic impression



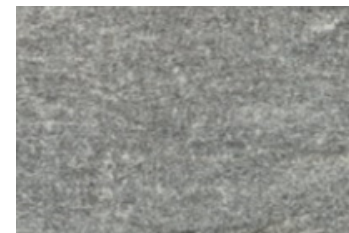
Terracotta tile



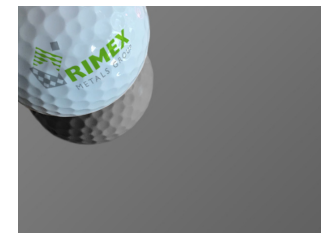
Precast balcony



Entrance matting



Porcelain floor tile



Metal entrance



# Homes artistic impression



**Engineered Laminate**



**Timber laminated  
Front door**



**Wool looped  
carpets**



**White internal doors  
Stainless ironmongery**



**Porcelain Wall Tile**



**Porcelain Floor Tile**



# Ebury Views artistic impression



**Ebury Bridge Road**



**Grosvenor Road**