

In this issue Keeping in Touch,
Phase 2 Demolition Process,
Planning Awards 2023, South West Fest,
Meet True Tanzania,
'Ukrainian Dream' Exhibition,
Construction Updates



Keeping in touch – Drop-in sessions at Ebury Edge

Although the Ebury Bridge Regeneration Office officially closed on 22 May, the team are still on hand to support you with any issues or concerns.

We can arrange appointments by emailing eburybridge@westminster.gov.uk or call us free on **0800 011 3467**. We're also holding monthly drop-in sessions on the first Tuesday of every month at Ebury Edge.

DROP-IN SESSIONS

**First Tuesday of the month,
4pm to 7pm
Ebury Edge Community Space –
43 Ebury Bridge Rd, SW1W 8DX**

Drop in and speak to a member of the Ebury Bridge Regeneration Team, Kathryn Ridyard BYUK Resident Liaison Officer, and Louis Blair from Communities First.

Keep up
to date

Phase 2 Demolition Process

We previously notified residents about the preparation works for the Phase 2 demolition and this has now started. At the end of May Westminster City Council officially handed over the last block within Phase 2. The demolition contractor, John F Hunt, is now in possession of the unoccupied Bridge, Rye, Westbourne and Victoria Houses.

Phase 2 Demolition works will start later in the year, and we will notify you in advance about the activities taking place on site. For now, the preparation works will consist of scaffolding and new hoarding line installation.

If you have any questions, please contact the Westminster City Council Ebury Regeneration Team.



Ebury Bridge received the top prize at the Planning Awards 2023

On 8 June our Ebury Bridge regeneration scheme scooped the top prize at the Planning Awards 2023. Judges noted the scheme 'has the potential to act as a vivid example of how existing communities can be rebuilt to house more people now and in the future.'



Phase 2 Design Consultation, July 2023

The next guided exhibition about Phase 2 Design, will be held in Ebury Edge Community Space on Tuesday 25 July, 6pm to 8pm.

Many improvements such as enhancing the relationship between buildings, reducing embodied carbon, and applying internal changes to upgrade functionality, are part of the envisaged design changes. We will send you an invitation letter close to the event.



Book your space using the QR code

SCAN ME

We are opening four new housing service centres

The first of four new Housing Service Centres was officially opened on Monday on the Mozart estate in Queens Park. Residents will be able to drop in and speak face-to-face with the housing team about a range of issues including repairs and maintenance, or to seek advice if they need support with paying their bills. Find out more about our new housing centre.

The centre on the Mozart Estate, Bruckner Street, in Queen's Park was the first in the initial rollout, three further facilities in Pimlico, Bayswater and Soho will be opened in the coming months ensuring residents across the borough benefit from the support our housing team has to offer. Find out more here: www.westminster.gov.uk/news/four-new-service-centres



South West Fest – Summer Programme

SouthWestFest – South Westminster's Award Winning Cultural and Community Festival Returns for 2023 from the 30 June to the 21 of July.

This year's theme is 'SouthWestFest at Twenty' – a festival of celebration, reflection and hope: celebrating the 20th year of the Festival and reflecting on how the area has changed in that time; and exploring our community's hopes for the future, with a focus on the environment.

The full programme includes over 85 events both online and in person, over three weeks across 23 local venues including Westminster Abbey, the Tate, The Abbey Centre and Cave, produced in partnership with local community groups, individuals and organisations.

For the full festival brochure, go to issuu.com/southwestfest/docs/festival_brochure All events are free, and some require booking, head to www.southwestfest.org.uk/whats-on for more information.



Meet True Tanzania – Ebury Edge Community Space

'True Tanzania promotes a deeper understanding and appreciation of Tanzanian art, culture, nature, cuisine, people, and sustainable tourism. We engage with local artists and artisans, fostering exchanges to build communities and create collaborations. Supporting local art boosts the economy and shared prosperity.

Ebury Edge allows us to validate our concept, and so further we have received lots of positive feedback. We plan to run workshops to engage and share our vision with the community. Join our movement, not just a brand.

Together, we make a difference by supporting the independent artists, connecting communities, and promoting responsible tourism. Let's arrive as tourists and leave as friends with lasting connections. Join us on this transformative journey to bridge cultures and foster appreciation for Tanzanian art and culture in the West.'

Annastazia

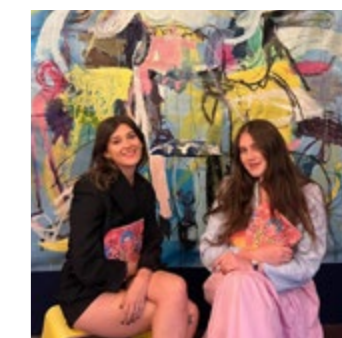


'Ukrainian Dream' Art Exhibition

'UKRAINIAN DREAM' EXHIBITION TOOK PLACE IN EBURY EDGE FROM 1 JUNE TO 14 JUNE.

Curated in partnership with Kozytskyi Charity Foundation from Lviv and approved by the Professors of Sotheby's Institute of Art, the exhibition showcased paintings by 11 artists.

Also on show there were modern ceramic pieces of accomplished artist like Mr Marek Cecula, who's a visiting Professor at the Royal College of Art, as well as Ukrainian themed accessories. The exhibition was a success and 100% of the profit went to humanitarian aid, the organisers dedicated this exhibition to rehabilitation of civilians.



Ebury Edge Activities

Carly's Angels Nursery
Every Wednesday and Thursday, 8am to 4pm.

Spaces available, we offer FREE funded placements. Please email at carlys_angels@yahoo.com

Tango Classes
Every Thursday, 7.30pm to 9.30pm

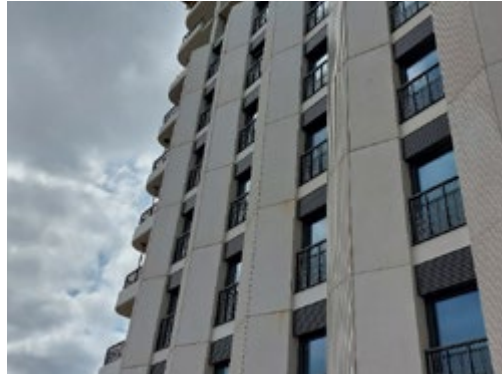
Citizens Advice
Every second Tuesday of the month, 9am to 12pm

For more information, or to book the Community Space, please email ebury@meanwhitespace.com. Follow [@EburyEdge](https://www.instagram.com/EburyEdge) on Instagram for updates on events and promotions.



Book the Community Space

Construction Updates



Phase 1 of the redevelopment of the estate is underway.

Block 7

- The floors have been completed to level 15
- The core of the building has been completed and the jump form system has been removed
- Precast facade is now installed to level 8
- B7 window installation is continuing up the building

Block 8

- The floors have been completed to level 13
- The core of the building is at level 17 and the jump form system has been removed
- B8 window installation is continuing up the building

March to June

- Commence the internal fitout
- Commence precast facade installation
- Installation of substation
- Installation of water main

June to September

- Internal fitout ongoing
- Completion of RC frame
- Façade installation ongoing including terracotta tiles
- Substation energisation

Please contact our **Resident Liaison Officer Kathryn Ridyard** (details to the right of the page) with any construction-related queries.

A new approach to working with Communities

We believe that community involvement is the heart and soul of a thriving city and this event is your opportunity to share your thoughts on how we can improve our work together and tell us what matters most to you.



June 27, 12pm to 4.30pm, Grand Junction, Rowington Close, W2 5TF



Independent Advice on Regeneration for Ebury Bridge residents

Communities First is your Independent Resident Advisor for Ebury Bridge, providing free independent and confidential advice to tenants and leaseholders on the implications of regeneration plans on your estate.

Please feel free to contact Louis at **0300 365 7150** or email ebury@communitiesfirst.uk.com

Ebury Bridge

📍 Regeneration Base, 15 to 19 Ebury Bridge Road, SW1W 8QX

📞 0800 011 3467

@ eburybridge@westminster.gov.uk

🌐 eburybridge.org

🌐 eburyedge.com

📘 facebook.com/eburybridgerenewal

Westminster City Council

🌐 westminster.gov.uk

Communities First

📞 0300 365 7150

@ enquiries@communitiesfirst.uk.com

You can unsubscribe from this newsletter by emailing eburybridge@westminster.gov.uk quoting your address.

Your questions on the construction

Kathryn is contactable from Monday to Friday between 9am to 5pm at kathryn.ridyard@bouygues-uk.com, eburybridge.enquiries@bouygues-uk.com or **07788 922170**.

Stay tuned for more details about when and where to meet with Kathryn in person from June.

Don't hesitate to contact Kathryn

FAIRER
WESTMINSTER