

In this issue CPG site visit,
Ebury Regeneration Office Updates,
Community Space Workshops,
King's Coronation, Ebury Edge Activities,
Easter Extravaganza, Construction Updates



Community Partnership Group (CPG) site visit

You'll have noticed that the new homes are really starting to take shape! The Community Partnership Group (CPG), made up of residents and local neighbours, recently had the opportunity to don their hard hats and visit the site.

Arranged by our contractors Bouygues in early April, the residents and team visited both the new blocks, explore the basements and sample the views from where the new balconies will sit. The CPG were really impressed at the progress and this increased the excitement they felt about moving into their new homes.

Our team is here to support you with any questions you may have. You can contact us at eburybridge@westminster.gov.uk, call **0800 011 3467** or come to the **Regeneration Base, 10am–4pm until 19 May 2023.**



Ebury Bridge Regeneration Office – Important Update

As the regeneration progresses, we are now approaching the early stages of Phase 2. As you may be already aware, the Regeneration Office is part of the group of blocks that will make way for the new Phase 2 homes and **will need to close from Friday 19 May 2023** to make way for the demolition of Rye House where the office sits.

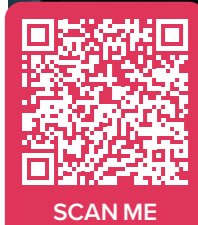


After the 19 May the Regeneration Team will still be contactable by phone and email, and from **Tuesday 6 June, drop-in sessions will be held every first Tuesday of the month at Ebury Edge, 4pm–7pm.**

Future Community Space Workshops – Have your say

In conjunction with our architectural design team, residents and neighbours who are part of the Community Partnership Group, met to co-design the recent workshops aimed at shaping the future Community Spaces at Ebury. At the sessions, residents were able to discuss with the architects and the management team what the new space should look like. The overall feedback was very positive about the spaces and we received many comments and suggestions about uses, design and materials.

The boards can be found on the website at eburybridge.org in the Engagement Boards section. A further public consultation workshop will be held on **Monday 5 June.**



Please use the QR code to book your spot – **5 June 2023, 6.00pm–7.30pm, at Ebury Edge.**



King's Coronation Screening at Paddington Recreation Ground

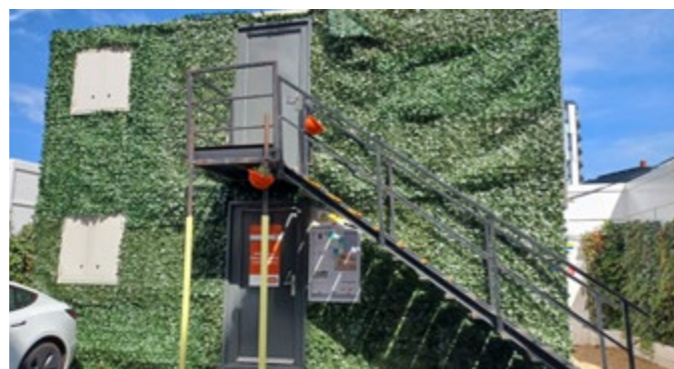
In celebration of the Coronation of His Majesty The King and Her Majesty The Queen Consort, ceremonial events and local festivities will be taking place across Westminster from 6 to 8 May.

The Coronation ceremony is taking place on **Saturday 6 May 2023**, and there will be a weekend of celebrations, including a Coronation Concert at Windsor Castle, street parties, and a chance to volunteer for good causes.

Find out about events happening near you at: westminster.gov.uk/coronation-king-charles-iii

Changes to the AFTERNOONS Tea Activity

We're letting you know about the temporary suspension of the 'Afternoon Tea' events as the Resident Liaison Cabin must be moved as works begins on Phase 2. With Bouygues UK, we are looking for a suitable venue where residents can continue to meet with Kathryn, the Bouygues UK Resident Liaison Officer. More information will be in the next newsletter.



Ebury Edge Activities

Carly's Angels Nursery
Every Wednesday and Thursday, 8am–4pm.

Citizens Advice
Every second Tuesday of the month, 9am–12pm

Spaces available, we offer FREE funded placements. Please email at carlys_angels@yahoo.com

Yoga Classes with Chang
From Monday 27 February, 5.30pm for 10 consecutive weeks. For more information, please email at csp.pimlico@gmail.com

Tango Classes
Every Thursday, 7.30pm–9.30pm

For more information, or to book the Community Space, please email ebury@meanwhitespace.com. Follow [@EburyEdge](https://www.instagram.com/EburyEdge) on Instagram for updates on events and promotions.

Book the Community Space

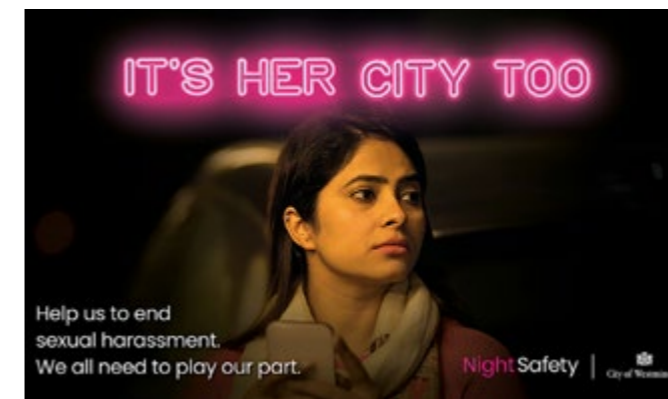


We all need to play our part

Normally your instinct will tell you when something doesn't look right, or when something doesn't feel right. When someone's behaviour feels inappropriate, unwanted, offensive or threatening, you can choose to challenge it.

Research has shown that bystander intervention is a really effective way of reducing the likelihood of sexual harassment and assault occurring. No one is asking to be sexually harassed or assaulted. If you see something, report it and help us to stop sexual harassment.

Find out how you can help here: westminster.gov.uk/night-safety



Easter Extravaganza at Ebury Edge

At the Easter Extravaganza on 6 April some amazing easter bonnets and decorated eggs were created. Children and adults had fun hunting around the Ebury Edge courtyard.

The lucky winner found the golden egg and received a shopping voucher (but wasn't prepared to confirm whether more Easter eggs were purchased with it). A big thank you to all the kids and parents who joined the Regeneration team and Bouygues UK staff, we hope to see you all at the next community event.

Westminster Residents who rent with us

We launched the Rent Support Fund to help social housing tenants struggling with rent payments, we have set aside the sum of £1m to support our tenants who are not entitled to full benefits. The Council's Rent Support Fund has been created specifically to help those in financial difficulty.

If you need assistance call 0800 358 3783 to speak to an income officer or visit our website at: westminster.gov.uk/rent-support-fund



Construction Updates



Phase 1 of the redevelopment of the estate is underway.

PRESENT WORKS

Block 7

- The floors have been completed to level 11
- The core section of the building is at level 14
- Precast façade is now installed to level 2

Block 8

- The floors have been completed to level 10
- The core section of the building is at level 13

Ground Source Heat Pump (GSHP) Infrastructure

- The GSHP infrastructure commenced on 23 January 2023 and is due to continue for the next 20 weeks in sections around the estate.

- The boreholes are now complete, and the rig has now moved back onto site. Fencing will remain in place while the testing regime is completed.

Occupancy

- Bridge House is now unoccupied and fenced off for security reasons. BYUK will be clearing the items left by the foodbank over the coming week or so.

UKPN works

- Further road works in July are planned by UKPN at the junction of Ebury Bridge Rd.

Please contact our **Resident Liaison Officer Kathryn Ridyard** (details at the bottom of the page) with any construction-related queries.

Ebury Bridge

📍 Regeneration Base, 15 to 19 Ebury Bridge Road, SW1W 8QX

📞 0800 011 3467

@ eburybridge@westminster.gov.uk

🌐 eburybridge.org

🌐 eburyedge.com

📘 facebook.com/eburybridgerenewal

Westminster City Council

🌐 westminster.gov.uk

Communities First

📞 0300 365 7150

@ enquiries@communitiesfirst.uk.com

You can unsubscribe from this newsletter by emailing eburybridge@westminster.gov.uk quoting your address.

Independent Advice on Regeneration for Ebury Bridge residents



Communities First is your Independent Resident Advisor for Ebury Bridge, providing free independent and confidential advice to tenants and leaseholders on the implications of regeneration plans on your estate.

Please feel free to contact Louis at **0300 365 7150** or email ebury@communitiesfirst.uk.com

Construction milestones

As block 7 and 8 are under construction, we have now reached two key milestones of the construction programme. The contractor is assembling and installing panels together, to compose the facades (including the new windows!!) of the buildings.



These have now reached up to level 4 for both blocks, and the process of closing up the buildings has officially started and progressing well. This is a very important stage when constructing a building. The second milestone is about the shoulder profiles. This is a very exciting stage, as the buildings have now reached level 12 and 11 respectively. This marks the completion of 2/3 of the 226 homes in Phase 1.

Your questions on the construction

Kathryn is contactable from Monday to Friday between 9–5p.m at kathryn.ridyard@bouygues-uk.com, eburybridge.enquiries@bouygues-uk.com or **07788 922170**. Stay tuned for more details about when and where to meet with Kathryn in person from June.

Don't hesitate to contact Kathryn

FAIRER
WESTMINSTER