

**In this issue** Residents Ballot Results – GLA Funding, Ebury Bridge Regeneration Office – New Opening Hours, Community Space Focused Workshops, Ebury Easter Extravaganza, Ebury Edge Activities, Cost of Living Support, Easter HAF Programme Construction Updates



## Residents Ballot – GLA Funding

Last month we told you about the result of the resident ballot held with Ebury Bridge residents. With 91% of voters in the support of the scheme this was a huge endorsement of the Council's proposals to increase the number of genuinely affordable homes at the regeneration scheme. With funding support from the Greater London Authority we can now deliver 171 new council homes for social rent in addition to the 198 replacement council homes we're building. A big thank you to all residents who took the time to vote in the ballot.

Our team is here to support you with any questions you may have. You can contact us at [eburybridge@westminster.gov.uk](mailto:eburybridge@westminster.gov.uk), call **0800 011 3467** or come to the **Regeneration Base, 15-19 Ebury Bridge Road, SW1W 8QX** on **Monday, Wednesday, and Friday, 10am – 4pm.**





# Ebury Bridge Regeneration Office – New Opening Hours

As you may be already aware, in preparation for Phase 2 the Ebury Regeneration Office will now be staffed by the Regeneration team on



**Monday, Wednesday and Friday between 10am and 4pm**

A letter has been sent to all residents living in and out of the Estate. Please feel free to contact the Regeneration team if you have any queries or would like to book an appointment.

## Community Space Focused Workshops – Have your say

A key component of the Ebury Masterplan is new community spaces. We're now ready to talk to you about what the flexible community facilities look like and how they can meet the needs of residents.



The workshops will be a great opportunity for the team and the residents to discuss the potential uses, design and materials for the new space. The Community Space will play an important role and, like Ebury Edge, it will provide social and economic opportunities for residents and the local community.

A first online workshop will be held with the Community Partnership Group (CPG) on **Tuesday 28 March, 6pm–7.30pm** to gather CPG members' feedback and incorporate their input into the finalised boards.

A following workshop, open to all residents and the public, will then be held on **Monday 17 April, 6pm–7.30pm** at the **Ebury Edge community space**.

An invitation letter has been sent out to residents. Please contact the team for any queries related to the scheme.

**Please scan the QR code to book your space on the 17 April workshop.**



Proposed Community Space (in pink)

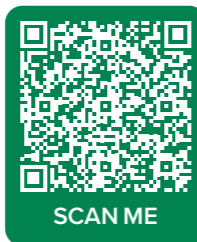


## Phase 2 Consultation – Feedback Received

As the project progresses, we have now reached the second round of consultation for Phase 2 of the scheme. The WCC Engagement team and our architects met with the Community Partnership Group (CPG) to co-design the exhibition boards.

This was followed by two Public Consultation guided events (**Tuesday 28 February** and **Thursday 2 March**).

Over 50 residents, between on-site and off-site attended the consultation events, as well as residents from the surrounding properties and area. The overall feedback is positive, with many households feeling optimistic about the design proposals for Phase 2. The revised Phasing, Tenure distribution, flats' layout and proposed materials were presented at the guided exhibitions, **the boards can be found on the website using the QR code.**



The boards can viewed in person during working hours, by booking an appointment with the team, please email us at [eburybridge@westminster.gov.uk](mailto:eburybridge@westminster.gov.uk)

## Afternoon tea with Bouygues (and the team)

The WCC Regeneration team and our contractor Bouygues UK, are trialing out afternoon drop-ins **until 13 April**.



These sessions are held every **second Thursday of the month 4pm–6pm**, in the Resident Liaison Office on site (behind Westbourne and Victoria Houses).

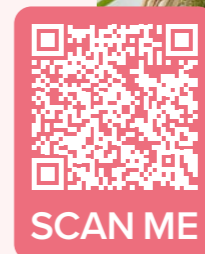
Afternoon teas are a great chance for you to talk to the Westminster team and Bouygues UK about the new homes, the current construction activity on site and any queries about the regeneration.



## Ebury Easter Extravaganza

Join us at the Easter Community Event on **6 April, 2pm–4pm** at **Ebury Edge community space**.

Get ready for the fantastic Easter eggs hunt and Easter bonnet making contest. Activities will be held in the community space and community courtyard. Light refreshments will be offered during the day.



## Cost of Living Support

There are a range of schemes available to help with rising energy costs and making your home more energy efficient.

See what help is available at [westminster.gov.uk/cost-of-living-support#energy](http://westminster.gov.uk/cost-of-living-support#energy)

## Easter HAF (Holiday Activity and Food) Programme

Once again, we are partnering with Young Westminster Foundation to provide activities and food for young people aged 4–16 (18 for those with special educational and needs) throughout the upcoming Easter school holiday.

Places are free for those on free school meals and at a discounted rate for all other young people. The activities are wide-ranging and include sports, arts and cooking including activities tailored for children and young people with special educational needs and disabilities.

Families can book all activities on Young Westminster Foundation's website at [ourcity.org.uk/haf-programme](http://ourcity.org.uk/haf-programme)

## Ebury Edge Activities

**Carly's Angels Day Care**  
Every Wednesday and Thursday, 8am–4pm.  
**Spaces available, we offer free funded placements. Please email at [carlys\\_angels@yahoo.com](mailto:carlys_angels@yahoo.com)**

**Tango Classes**  
Every Thursday, 7.30pm–9.30pm

**Citizens Advice**  
Every second Tuesday of the month, 9am–12pm

**Yoga Classes with Chang**  
From Monday 27 February, 5.30pm for 10 consecutive weeks. For more information, please email at [csp.pimlico@gmail.com](mailto:csp.pimlico@gmail.com)

For more information, or to book the Community Space, please email [ebury@meanwhitespace.com](mailto:ebury@meanwhitespace.com). Follow [@EburyEdge](https://www.instagram.com/EburyEdge) on Instagram for updates on events and promotions.



Book the Community Space



In addition to the holiday and activities food programme, we are also continuing to provide food vouchers for all children on free school meals over the school holiday. These will be distributed to eligible families in the form of supermarket vouchers at a weekly value of £17.50.



# Construction Updates

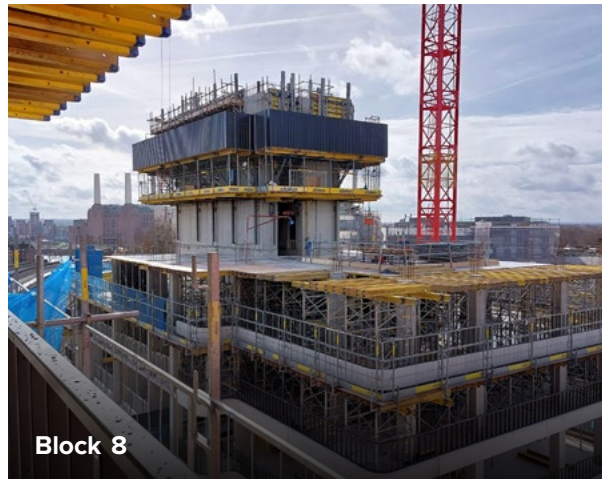
Phase I of the redevelopment of the estate is underway.

## JANUARY TO MARCH 2023

- Ground Source Heat Pump infrastructure installation
- Cores of Buildings 7 and 8 ongoing
- Floor slabs 6–10
- Water main connection – Ebury Bridge Road

## MARCH TO JUNE 2023

- Complete core of Building 7
- Floor slabs 8–17
- Services installation
- Installation of precast panels and façade
- Commence internal fit out



Please contact our **Resident Liaison Officer Kathryn Ridyard** (details at the bottom of the page) with any construction-related queries.

## Ebury Bridge

📍 Regeneration Base, 15 to 19 Ebury Bridge Road, SW1W 8QX

📞 0800 011 3467

@ eburybridge@westminster.gov.uk

🌐 eburybridge.org

🌐 eburyedge.com

📘 facebook.com/eburybridgerenewal

## Westminster City Council

🌐 westminster.gov.uk

## Communities First

📞 0300 365 7150

@ enquiries@communitiesfirst.uk.com

You can unsubscribe from this newsletter by emailing [eburybridge@westminster.gov.uk](mailto:eburybridge@westminster.gov.uk) quoting your address.

## Independent Advice on Regeneration for Ebury Bridge residents



Communities First is your Independent Resident Advisor for Ebury Bridge, providing free independent and confidential advice to tenants and leaseholders on the implications of regeneration plans on your estate.

Please feel free to contact Louis at **0300 365 7150** or email [ebury@communitiesfirst.uk.com](mailto:ebury@communitiesfirst.uk.com)

## Houses In Multiple Occupation (HMO)

As of 1 April, the price of the HMO license will be rising to £1,450. Westminster residents who live in a smaller flat or house share with three or more people forming two of more households are required to obtain a license.

Our Additional Licensing scheme aims to ensure good conditions for private renters in Westminster, to create a more professional rented sector with responsible landlords and letting agents.

We will tackle those who mistreat or fail to provide a decent, safe home to their tenants – landlords who fail to license risk enforcement from the council.

Learn more at [westminster.gov.uk/houses-multiple-occupation](https://westminster.gov.uk/houses-multiple-occupation)

## Your questions

Kathryn is based at the Resident Liaison Office on site (at the rear of Westbourne and Victoria Houses). She is on hand to answer any questions or concerns you may have. Kathryn's office hours are Tuesdays (10.30am–2.30pm), Wednesdays (12.30pm–4.30pm) and Thursdays (2.30pm–5.30pm). Kathryn is contactable from Monday to Friday at [kathryn.ridyard@bouygues-uk.com](mailto:kathryn.ridyard@bouygues-uk.com), [eburybridge.enquiries@bouygues-uk.com](mailto:eburybridge.enquiries@bouygues-uk.com) or **07788 922170**.

Don't hesitate to contact Kathryn

**FAIRER**  
WESTMINSTER