



Cllr. Liza Begum and Cllr. Matt Noble



Ebury celebrates Christmas in style!

On 3 December the Regeneration Team hosted its annual Christmas event at Ebury Edge. The event was sponsored by Bouygues UK and Gardiner & Theobald who also attended on the day.

There was a great turnout, and it was lovely to see members of the community coming together to

celebrate the festive season. There were lots of activities taking place, including Christmas card and Gingerbread decorating, Christmas films, hot chocolate, and festive treats. We also had real life reindeer attend the event and a special visit from Cllr. Matt Noble and Cllr Liza Begum who turned on the Ebury Christmas tree lights.



Christmas Opening Hours

The Regeneration Base will close for Christmas on **23rd December** and reopen on **3rd January 2023**. To report any emergencies, or concerns during this period, please contact our Housing Contact Centre on: **0800 358 3783**

Ebury Residents Ballot update

Since November, we have been talking to residents and the community about the Ebury Bridge resident ballot which will take place between the between 23 January to 16 February 2023.

Residents eligible to vote have already received letters and information about the ballot process. These can be viewed on eburybridge.org, or picked up from our Regeneration base at 15 - 19 Ebury Bridge Rd, SW1W 8QX.

We have also door knocked and called eligible voters to give more information about the ballot process. The next stage before the ballot takes place is the distribution of the Landlord Offer. All eligible voters will receive this document on 6 January 2023, which outlines the council's vision, our offer to you and how to cast your vote.

The document will also be available in print and online. We will continue speaking to all eligible residents before the ballot starts, so please do not hesitate to contact us if you have any questions on eburybridge@westminster.gov.uk

Do you need...

ترجمة?, Traduction?, Përkthimi?, Tradução?, ُTraducción?, Traduzione?, অনুবাদ?, 翻译?, 翻譯?

If you have difficulty reading this document because of a disability or because English is not your first language, we can help you. Please call us on **0800 011 3467**.

Phase 2 Residents Consultation

In the new year we will be consulting residents about the design proposals for Phase 2 of the development. There will be opportunities for residents to meet with the Phase 2 Design Team and provide feedback on the current proposals. We will host a series of workshops and events, and use your feedback where possible to feed into the Phase 2 design proposals.

We will also ask for your feedback about the design of the Community Space which will be delivered in Phase 2. Keep an eye out for letters and / or text messages in the new year which will provide more information about these consultation activities.



Construction Jobs Fair!

There will be several well-known construction employers attending the Bi-Borough Construction Jobs Fair and lots of opportunities available.

This event is a fantastic opportunity for you to meet with construction employers, find out about their vacancies, and apply for roles on the spot!

Employers will include:

- Bouygues UK
- Durkan
- Morgan Sindall Construction
- Wilmott Dixon

Employment Coaches from Westminster City Council and Kensington and Chelsea Council will be on hand to help answer any career-related questions.

We have a limited number of tickets available, so please register soon by scanning the QR code below on your tablet or smartphone.

Important Information for the day!

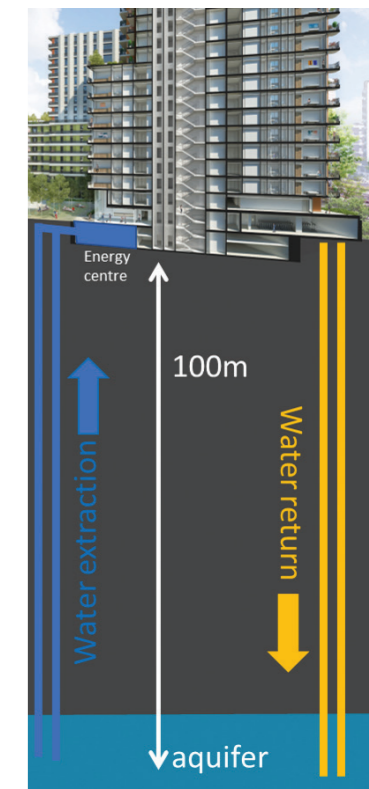
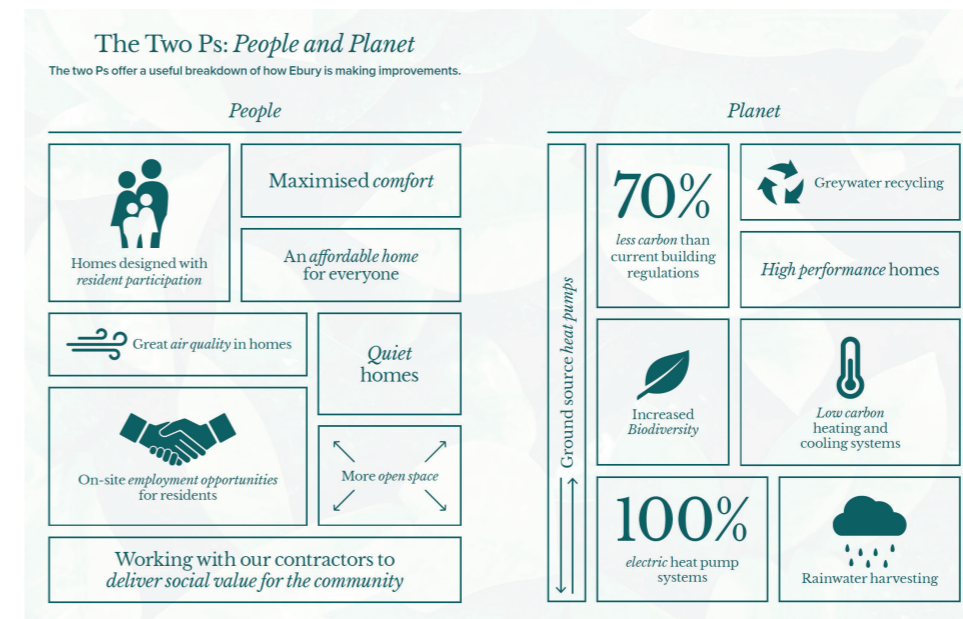
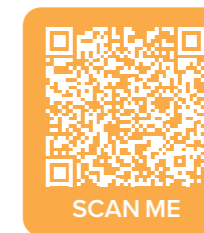
Bring an up-to-date CV with you - downloaded on your phone/personal device or printed is fine!



A Sustainable Ebury!

We recently published our Sustainability Booklet, which outlines how the Ebury development is environmentally friendly, and helps communities to thrive. See some of the key features below.

You can view the full booklet by scanning the QR code below on your Smartphone or tablet. We also have hard copies available at the Regeneration Base.



Ground source heat pump

All of the homes on the development will be heated by a ground source heat pump. This pump transfers heat from the ground outside, to inside the home, helping to reduce carbon emissions.

Phase 2 Ground Investigation Works

Ground Investigation works are taking place at Phase 2 of the Ebury Bridge regeneration project. This is to test the materials below ground and involves digging holes around the estate. A letter and map were sent out at the beginning of December to show where the holes will be and how long we expect each hole to dig.

We have hard copies of the map available at the office. Alternatively, please scan the QR code below on your Smartphone or tablet to view. We are working with our contractors to minimise disruption as much as possible.

Thank you for your patience whilst this work is being carried out. If you have any queries, please contact the team on the details below:



Email: eburybridge@westminster.gov.uk
 Phone: on **0800 011 3467**
 In person: **15 – 19 Ebury Bridge, Road, SW1W 8QX (Monday – Friday 9am-5pm)**

Coming up at Ebury Edge

December activities at the Community Space

Carly's Angels Nursery
 Every Wednesday and Thursday, 8am to 4pm

Tango Classes
 Every Thursday, 7.30 to 9.30pm

Citizens Advice
 Every second Tuesday of the month, 9am to 12pm

For more information, or to book the Community Space, please email ebury@meanwhilespace.com

Follow [@EburyEdge](https://www.instagram.com/EburyEdge) on instagram for updates on events and promotions.

Book the Community Space



Construction Updates

Phase 1 of the redevelopment of the estate is underway.

September to October 2022

- Central core and podium deck installation
- Ground floor slab and column installation
- Floor slabs Ground floor –Level 1
- Completion of Ground Source Heat Pumps wells

November to January 2023

- Ground source heat pumps infrastructure installation
- Floor slabs
- Water main connection

February to April 2023

- Complete core (block 7)
- Floor slabs (floors 8-17)
- Service Installation



Building 7



Building 8

Ebury Bridge

📍 Regeneration Base,
15 – 19 Ebury Bridge
Road, SW1W 8QX

📞 0800 011 3467

@ eburybridge@
westminster.gov.uk

🌐 eburybridge.org

🌐 eburyedge.com

📘 facebook.com/
eburybridgerenewal

Westminster City Council

🌐 westminster.gov.uk

Communities First

📞 0300 365 7150

@ enquiries@
communitiesfirst.
uk.com

Please contact out **Resident Liaison Officer Kathryn Ridyard** (details at the bottom of the page) with any construction-related queries.

Phase 2 Ground Site Investigation taking place between 5 – 23 December 2022 and between 5 – 26 January 2023. See page 3 for more details.

You can unsubscribe from this newsletter by emailing eburybridge@westminster.gov.uk quoting your address.

Independent Advice on Regeneration for Ebury Bridge residents



Communities First is your Independent Resident Advisor for Ebury Bridge, providing free independent and confidential advice to tenants and leaseholders on the implications of regeneration plans on your estate.

Please feel free to contact Louis at **0300 365 7150** or email ebury@communitiesfirst.uk.com

Come and chat with us at the next coffee morning

Coffee mornings are a great way for you to raise any questions you may have about the new homes and the current construction activity on site.

Please join us for a chat in the Resident Liaison Office on site (behind Westbourne and Victoria Houses).

The next coffee morning takes place every first Thursday of the month, 4 to 6pm.



Don't hesitate to contact Kathryn

Your questions

As you know, Kathryn is based in the Resident Liaison Office on site (at the rear of Westbourne and Victoria Houses). She is on hand to answer any questions or concerns you may have. Her office hours are Tuesdays (10.30 am to 2.30pm), Wednesdays (12.30 to 4.30pm) and Thursdays (2.30 to 5.30pm). Kathryn is contactable from Monday to Friday at kathryn.ridyard@bouygues-uk.com, eburybridge.enquiries@bouygues-uk.com or **07788 922170**

FAIRER
WESTMINSTER