

**In this issue** Ebury Bridge Residents Information Events  
Ebury Edge upcoming activities  
Rephasing update  
Construction updates



## Successful Engagement Events!

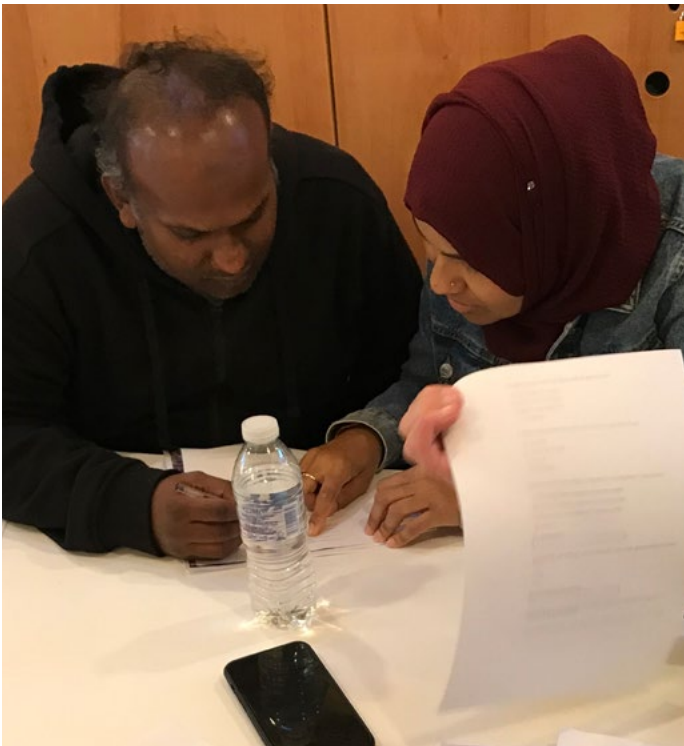
The team recently met with residents to provide updates about the new homes being built. This included updates on key dates, and images of the new homes.

The events were very well attended and it was great to feel the excitement in the room. See page 2 for a wonderful letter written by Asaelle, (16), daughter of one of our returning residents!

Residents completed surveys which will help the team to understand rehousing preferences when allocating to the new homes.

All information displayed at the events can be found on our website [www.eburybridge.org](http://www.eburybridge.org)

If you haven't yet completed the survey and are an Ebury secure tenant or resident leaseholder please call **0800 0113467**.



As mentioned on the front cover, please see the letter below written by Asaelle, a returning resident.

## Coming back to Ebury

My name is Asaelle and I have lived in Doneraile House from the moment I took my first breath. I made close friendships, watched the community grow and I've loved every memory created. When I first heard Ebury estate was getting knocked down I felt like a piece of my childhood was getting taken away from me, however, seeing the new plans and developments allowed me to see the brighter side of things. I was excited and couldn't wait for this project to finally begin. Moving from Ebury felt peculiar and I knew the ambience and atmosphere was going to be completely different. I was right. I created a mental countdown and wanted everything to be done in a blink of an eye. Each day I would ask myself when we would return and my impatience grew as I read every newsletter we would receive. I analysed every plan that was put forward and imagined myself in this new environment we would be entering in a few years. The moment we stepped out the gathering for returning residents, I could not contain my excitement as the new build plans brought optimism into my mind. I know I'll love the new Ebury and so will its new residents. New beginnings bring new blessings.

Asaelle, 16



## Compulsory Purchase Order update

The Compulsory Purchase Order (CPO) for the remaining buildings on the Ebury Bridge estate has now been confirmed. This gives both the Ebury Bridge community and the City Council certainty that all the new homes can be delivered as set out in the planning application.

CPO powers will only ever be used by the council as a last resort, and we will continue to work closely with all leaseholders to reach voluntary agreements and honour any agreements made to date. Completion dates will now need to be agreed with leaseholders to ensure that buildings are empty by the required time. The next article outlines the dates that existing buildings need to be empty.

Both the Ebury Bridge Regeneration Team and your Independent Tenant and Leasehold Advisor, Louis Blair are available for in-person meetings should you wish to discuss your circumstances with them.

## Apprenticeship with astudio!

We're delighted to announce that Sam, one of the students that participated in the Construction Youth Trust event in July went on to complete an apprenticeship with our architects, astudio!

This is an outstanding success story showing the impact that the event had. Sam shared lots of positive feedback about his time with astudio, telling us that he learned more about the architectural industry and how different teams come together to achieve a shared project vision.

To find out more information about work experience opportunities, contact the team: [eburybridge@westminster.gov.uk](mailto:eburybridge@westminster.gov.uk)



## Rephrasing update

There have been changes to some of the completion dates on the project, and the phase names.

What was previously phase 2a and phase 2b are now phase 2 and phase 3. The colour coded image below highlights each phase and their practical completion (PC) dates.



### Phasing and Practical Completion Key:

- Phase 1 expected PC May 2024
- Phase 2 expected PC May 2027
- Phase 3 expected PC May 2029

## Vacant Possession update

Vacant possession dates are the dates that the existing buildings on the estate need to be empty by. See the table below for the latest vacant possession dates:

Block name	Vacant possession date
Bridge House	May 2023
Westbourne House	May 2023
Rye House	May 2023
Victoria House	May 2023
Bucknill House	Summer 2024
Doneraile House	2026 / 2027

## Westminster Council resident moves to Ebury Edge!



We are extremely excited to announce that Suad, a Westminster City Council resident recently moved her business into the Ebury Edge incubator space!

Suad specialises in garments and home décor, and we are so glad to welcome her to Ebury Edge!

Visit Suad's store at **43 Ebury Bridge Rd, Ebury Edge, SW1W 8DX**

## Coming up in Ebury Edge

### October activities in the community space

**Carly's Angels Nursery**  
Every Wednesday and Thursday, 8am to 4pm

**Tango Classes**  
Every Thursday, 7.30 to 9.30pm

**Citizens Advice**  
Every second Tuesday of the month, 9am to 12pm

For more information or to book the community space, please email [ebury@meanwhitespace.com](mailto:ebury@meanwhitespace.com).

Follow [@EburyEdge](https://www.instagram.com/EburyEdge) on instagram for updates on events and promotions.

Book the community space



## Join our resident research panel and be in with the chance to win £100



We have set up this panel so it is easier for our residents to provide feedback, tell us your views on specific topics and help shape the council's work through one-off discussions and surveys.

There will be opportunities throughout the year and you will receive at minimum a £35 voucher for each discussion group that you take part in. When completing surveys, you will have the chance to enter voucher draws, sometimes worth up to £100.

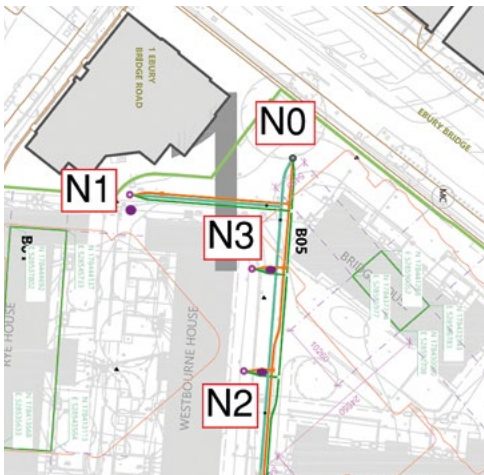
Find out if you are eligible to sign up to our resident research panel at [westminster.gov.uk/resident-research-panel](https://www.westminster.gov.uk/resident-research-panel)

# Construction updates

Phase 1 of the regeneration and redevelopment of the estate is underway.

## ☑ Borehole Drilling

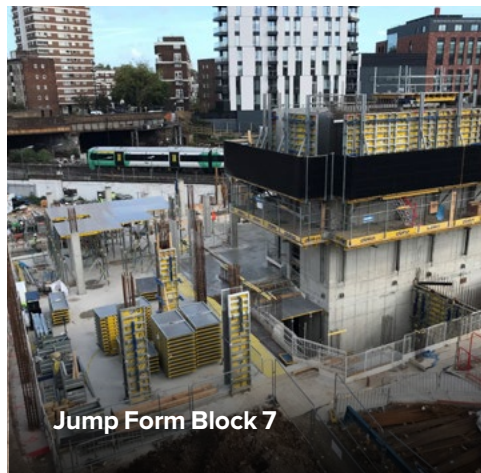
Drilling to the borehole labelled as 'N3' has been completed. Works have started in the location labelled 'N2', and are expected to be complete at the end of October. Please contact our **Resident Liaison Officer Kathryn Ridyard** (details at the bottom of the page) with any construction-related queries.



# This month's activity on-site

Here are October's construction highlights:

- The Basement core (spine of the building) to Blocks 7 and 8 has been completed.
- The ground floor structure for Blocks 7 and 8 are still being installed.
- The core of each block will be 3 levels above the floor slabs.
- Bouygues UK expects to start testing the boreholes' flow rate towards the end of October/beginning of November.



## Ebury Bridge

📍 Regeneration Base, 15 – 19 Ebury Bridge Road, SW1W 8QX

📞 0800 011 3467

@ eburybridge@westminster.gov.uk

🌐 eburybridge.org

🌐 eburyedge.com

📘 facebook.com/eburybridgerenewal

## Westminster City Council

🌐 westminster.gov.uk

## Communities First

📞 0300 365 7150

@ enquiries@communitiesfirst.uk.com

You can unsubscribe from this newsletter by emailing [eburybridge@westminster.gov.uk](mailto:eburybridge@westminster.gov.uk) quoting your address.

## Independent Advice on Regeneration for Ebury Bridge residents



Communities First is your Independent Resident Advisor for Ebury Bridge, providing free independent and confidential advice to tenants and leaseholders on the implications of regeneration plans on your estate.

Please feel free to contact Louis at **0300 365 7150** or email [ebury@communitiesfirst.uk.com](mailto:ebury@communitiesfirst.uk.com)

# Come and chat with us at the next coffee morning

Coffee mornings are a great way for you to raise any questions you may have about the new homes and the current construction activity on site.

**Please join us for a chat in the Resident Liaison Office on site (behind Westbourne and Victoria Houses).**

**The next coffee morning will be on Tuesday 8th of November, 10am – 1pm.**



## Your questions

As you know, Kathryn is based in the Resident Liaison Office on site (at the rear of Westbourne and Victoria Houses). She is on hand to answer any questions or concerns you may have. Her office hours are Tuesdays and Thursdays from 10.30am – 2.30pm and Wednesdays from 12.30 – 4.30pm. Kathryn is contactable from Monday to Friday at [kathryn.ridyard@bouygues-uk.com](mailto:kathryn.ridyard@bouygues-uk.com), [eburybridge.enquiries@bouygues-uk.com](mailto:eburybridge.enquiries@bouygues-uk.com) or **07788 922170**

Don't hesitate to contact Kathryn

**FAIRER**  
WESTMINSTER