

In this issue Halloween at Ebury
Ebury Edge upcoming activities
Employment opportunities
Construction updates

Join the Ebury Community Partnership Group!

We want to hear from you!

We're committed to involving residents and the local community in the Ebury Bridge renewal project and are creating a Community Partnership Group, which will build on the fantastic work of our resident led Community Futures Group.

The Community Partnership Group will represent the views of residents and local stakeholders.

The group will be made up of residents living on the estate and in the surrounding area, residents that have been temporarily rehoused and local businesses.

We will work closely with the Community Partnership Group, providing regular updates about build progress and design. The group will be the voice of the community, and have regular opportunities to feedback the views of local residents.

Meetings will be held monthly at the Ebury Edge Community Centre. We currently have vacancies and want to hear from you!

If you'd like to join the Community Partnership Group, or want more information, contact the team at **eburybridge@westminster.gov.uk**, or call **0800 011 3467**



The Westminster City Council Regeneration Team continues to be available to support and provide information about the Regeneration Project.

Feel free to contact us at **eburybridge@westminster.gov.uk**

Ebury does Halloween!

Autumn is here, which means Halloween is near! Get your costumes ready and your pumpkins out, we're going to celebrate in style at Ebury!

October's coffee morning has been replaced by this event, so join us at the Ebury Edge Community Centre on **Thursday 27 October from 3 – 6pm**. We'll be hosting Halloween-themed activities including pumpkin carving, a spooky treasure hunt and face painting! There will also be a costume competition with prizes up for grabs.

The Engagement Team and Resident Liaison Officer will be available to answer any questions about the Ebury Bridge renewal project.

Book onto this event by scanning the QR code (see right) using your smartphone, or by calling **0800 011 3467**



BOOK NOW

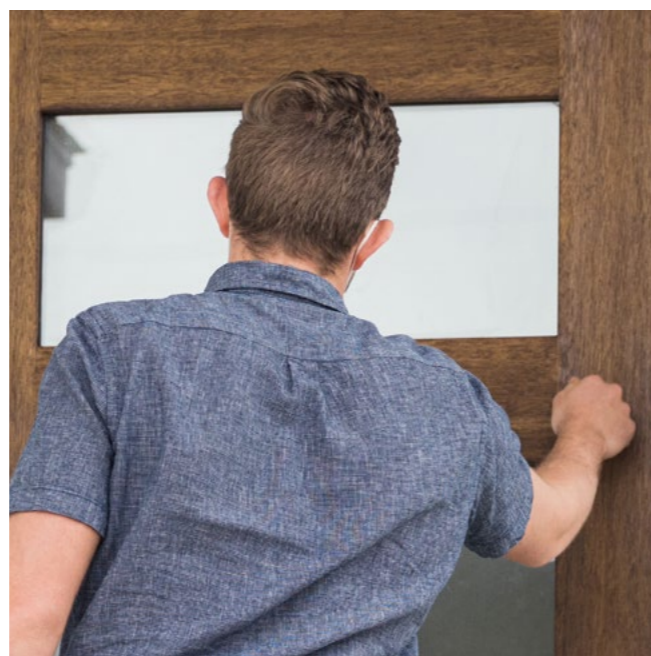
Light refreshments will be provided on the day



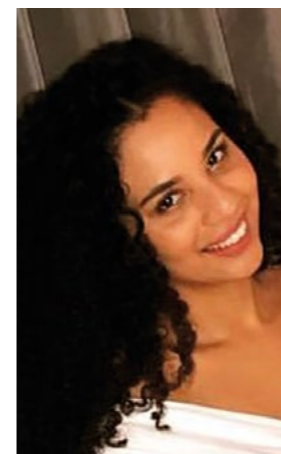
Community Thursdays come to Ebury

On Thursday 15 September, our Housing teams visited the Ebury Bridge estate to knock on doors and assist with general queries. This project is known as 'Community Thursdays' and takes place across the city on different dates throughout the year. It was great to speak to members of the Ebury Bridge community, and the team was able to help with most queries on the day!

You may have recognised a familiar face, as James from the Communications and Engagement team was on hand to answer any regeneration-related questions. If you'd like to request a visit from the Housing team on it's next trip to Ebury, please email communitythursdays@westminster.gov.uk



Eve joins the Ebury team!



We're delighted to welcome Eve Mouser-Smith, our new Communications and Engagement Manager to the Ebury Bridge Comms and Engagement Team.

Eve and her team will lead the project's engagement and communications activities, and will work closely with Bouygues UK and other teams to ensure that you are kept informed and involved with everything Ebury!

A few words from Eve:

"I've worked in resident engagement, communications and regeneration for over five years, and I'm extremely excited to join the Ebury Bridge project. Looking forward to working closely with the community and meeting some of you in the near future!"

Eve's contact details:
Phone: **0800 011 3467**
Email: eburybridge@westminster.gov.uk

Coming up in Ebury Edge

September activities in the community space

Carly's Angels Nursery
Every Wednesday and Thursday, 8am to 4pm

Tango Classes
Every Thursday, 7.30 to 9.30pm

For more information or to book the community space, please email ebury@meanwhitespace.com.

Follow [@EburyEdge](https://www.instagram.com/EburyEdge) on instagram for updates on events and promotions.



Naming of the new Squares on the project!

We've been researching the history of the Ebury Bridge Estate and some of the most influential members of the community.

We've now provisionally selected names for the new Squares on the development.

The proposed names are:

- Bridge Square
- Manor Square
- Alba Square
- Willow Square

We'd love to know what you think about these names, so please email us at eburybridge@westminster.gov.uk, or call **0800 011 3467** with your feedback and suggestions.



Train to be a Bike Mechanic!

What's on offer?

- Expert Bike Mechanic training
- Job interview on completion of training
- Opportunity to receive a free bike and equipment on completion of the training

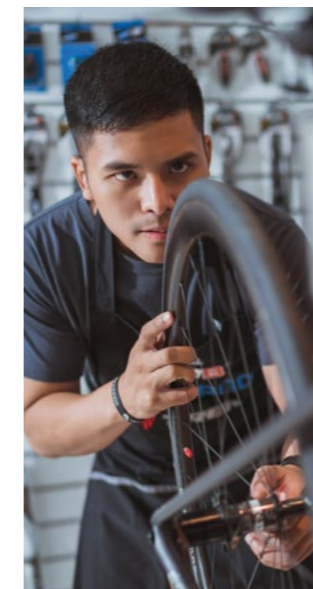
Who do I contact?

To find out more contact Liz.byrne@groundwork.org.uk, or call **07702 942160**

Am I eligible?

You are eligible to apply for this training opportunity if you're:

- Aged between 17 and 30 years, and aren't currently in Employment, Education or Training
- Educated to Level 1 in English and Maths



World leading organisations want to employ YOU!

Westminster Employment Service is proud to present our largest ever job fair taking place at Lord's Cricket Ground on **Monday 31 October**.

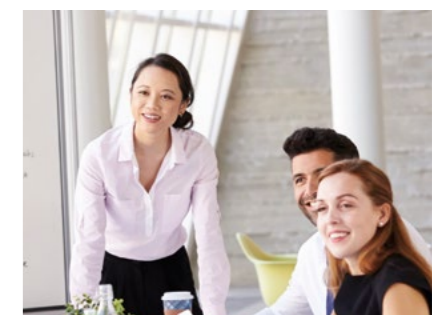
This event is ideal if you're looking for a new role, want to upskill, and/or want to improve your employability.

There will be world-leading companies such as Google and Tesla at the event. Companies are looking to hire on the day, and there will be opportunities to talk to the team about the thousands of roles available.

Book your place now by scanning the QR code below on your smartphone or tablet, or calling 0800 011 3467.



BOOK NOW

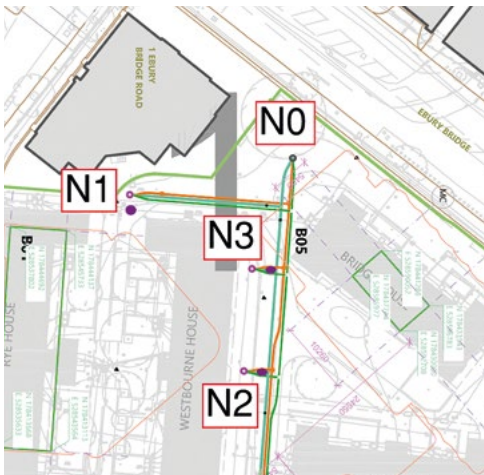


Construction updates

Phase I of the regeneration and redevelopment of the estate is underway.

☑ Borehole Drilling

Drilling to the borehole labelled as 'N3' below is due to complete at the end of this month. Works will start in the location labelled 'N2', and are expected to complete at the end of October. Please contact our **Resident Liaison Officer Kathryn Ridyard** (details at the bottom of the page) with any construction-related queries.



This month's activity on-site

Here are September's construction highlights:

- The ground floor structure for Blocks 7 and 8 will start to be installed.
- The Basement core (spine of the building) will start to be installed for Block 8.
- The walls surrounding the outside of Blocks 7 and 8 will start to be constructed.
- We expect the first borehole being drilled in the north of the estate to complete.
- Drilling to the second borehole in the north of the estate will start.



Ebury Bridge

📍 Regeneration Base,
15 – 19 Ebury Bridge
Road, SW1W 8QX

📞 0800 011 3467

@ eburybridge@
westminster.gov.uk

🌐 eburybridge.org

🌐 eburyedge.com

📘 facebook.com/
eburybridgerenewal

Westminster City Council

🌐 westminster.gov.uk

Communities First

📞 0300 365 7150

@ enquiries@
communitiesfirst.
uk.com

You can unsubscribe from this newsletter by emailing eburybridge@westminster.gov.uk quoting your address.

Independent Advice on Regeneration for Ebury Bridge residents



Communities First is your Independent Resident Advisor for Ebury Bridge, providing free independent and confidential advice to tenants and leaseholders on the implications of regeneration plans on your estate.

Please feel free to contact Louis at **0300 365 7150** or email ebury@communitiesfirst.uk.com

Come and chat with us at the next coffee morning

Coffee mornings are a great way for you to raise any questions you may have about the new homes and the current construction activity on site.

Please join us for a chat in the Resident Liaison Office on site (behind Westbourne and Victoria Houses).



October's coffee morning has been combined with the Halloween event on page 2! We're looking forward to seeing you there.

Your questions

As you know, Kathryn is based in the Resident Liaison Office on site (at the rear of Westbourne and Victoria Houses). She is on hand to answer any questions or concerns you may have. Her office hours are open Tuesdays and Thursdays from 10.30am – 2.30pm and Wednesdays from 12.30 – 4.30pm.

Kathryn is contactable from Monday to Friday at kathryn.ridyard@bouygues-uk.com, eburybridge.enquiries@bouygues-uk.com or **07788 922170**

Don't hesitate to contact Kathryn