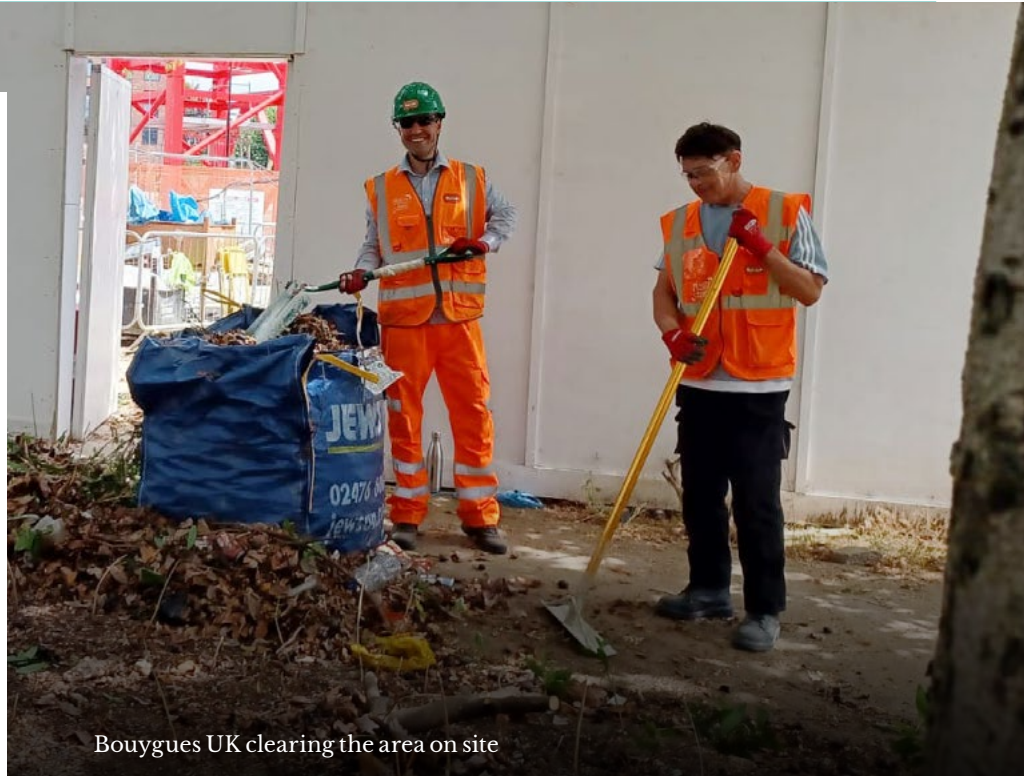


In this issue The new nursery outdoor space
Open Day at Ebury Edge
Ebury Edge upcoming activities
Construction update, Coffee mornings

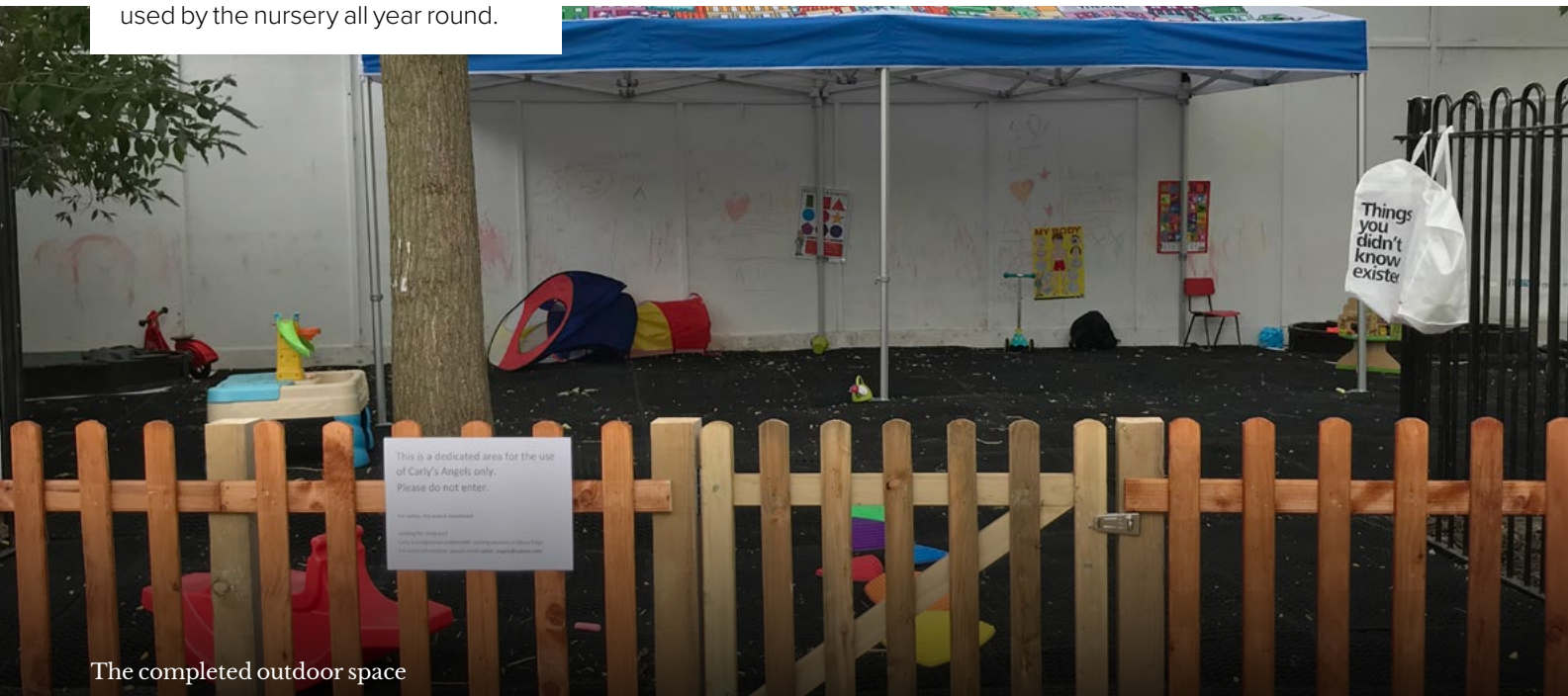
The new outdoor nursery space in Ebury Edge

A big thank you to the Bouygues UK team, who completed the works for the new outdoor nursery area so swiftly.

Nursery children were able to enjoy the space, use the paddling pool and play with sand during the July heatwave. We hope that this colourful and vibrant new space can be of help during the hottest days of summer and look forward to seeing it being used by the nursery all year round.



Bouygues UK clearing the area on site



The completed outdoor space

Ebury SW1 scores 'Outstanding' on the BREEAM sustainability assessment

BREEAM Communities is a framework used internationally to assess sustainable design in the master planning of regeneration projects.

BREEAM's standards are used to make buildings better for residents and the environment.

We are delighted to announce that Ebury SW1 scored 'Outstanding' (the highest possible ranking) in the latest BREEAM assessment, with an impressive overall score of 91.1% across the following categories:

- Social and economic wellbeing
- Local economy
- Resource and energy
- Ecology and transport

This score demonstrates our commitment to creating buildings that are more sustainable for residents and kinder to the planet.

For more information about BREEAM visit www.bregroup.com

Supporting routes to net zero	Reducing costs
Providing independent, third-party assurance on asset performance and sustainability	Supporting the planning process in sustainable decision making
Supporting disclosures and reporting requirements	Enhancing economic and social value
Mitigating environmental impact	Contributing to ESG goals

From the July Open Day event



Ebury Edge Open Day

Residents attended the Open Day in Ebury Edge on Saturday 23 July. They took part in lots of fun activities including a badge making workshop (hosted by The Kindness Studio), hula hooping and a community book swap.

There were also special offers in the shops, Citizens Advice sessions, a BBQ and free ice cream for all. Stay tuned for more exciting activities and events at Ebury Edge!



Coming up in Ebury Edge

August activities in the community space.

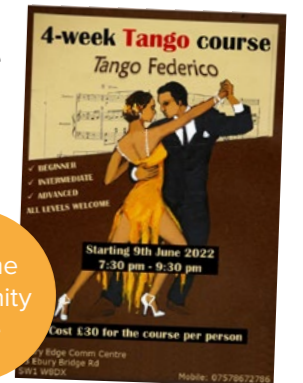
Carly's Angels Nursery
Every Wednesday and Thursday, 8am to 4pm

Tango Classes
Every Thursday, 7.30 to 9.30pm

Citizens Advice
Every second Tuesday, 9am to 12pm

For more information or to book the community space, please email mandy@meanwhitespace.com

Follow @EburyEdge on instagram for updates on events and promotions.



Book the community space

A small update about the Ebury SW1 naming project

As mentioned in the previous issue, the Regeneration team at Westminster City Council have been researching the history of Ebury and its most influential members of the community.

With the support of the Naming and Numbering team in Westminster, the team are now starting to think about names for the four new squares of Ebury SW1. We would love your feedback and input on this process, so please email us at eburybridge@westminster.gov.uk with any suggestions that you have.



Ebury Bridge, 1959 – photo from the Westminster Archive

Our main contractor on site, Bouygues UK, achieved top marks for the second time

The team from the Ebury site were visited for a second time on 27 July 2022.

CCS Monitor, Lynette Whittle, commended the site team on their communication with the community, support for local organisations, strong promotion of environmental targets and the extensive facilities provided for their workforce.

- Respecting the community 15/15
- Care for the environment 15/15
- Value their workforce 15/15

Overall score 45/45



The Farmhouse Cafe is open, come and try their delicious food

The Farmhouse cafe opened to the public on 1 August, we are very happy to see so many residents and the wider community enjoying their coffee and meals in the courtyard or cafe spaces.

The Farmhouse cafe is open seven days a week, 8am to 8pm. Come and visit them at 43 Ebury Bridge Rd, Ebury Edge, SW1W 8DX



Ebury Edge, view from Ebury Bridge Rd

Bouygues UK – Pre-employment opportunities for residents

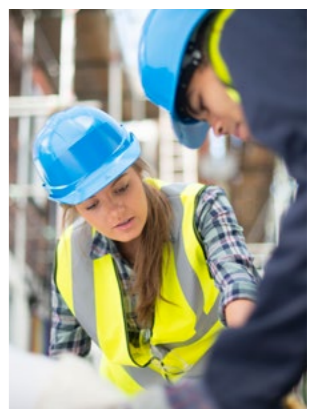
Bouygues UK is working on large construction projects across London to help residents gain experience that could lead to apprenticeships or full time employment.

Join their pre-employment programme:

Screening and enrolment
Tuesday 30 August, 10.00am
Earls Court Skills Centre, SW6 1TT

Training
Monday 5 – Friday 23 September, 8.30am to 4.00pm
Earls Court Skills Centre, SW6 1TT

To find out more call **020 4541 1318**, email referrals@theskillcentre.co.uk or visit theskillcentre.co.uk



Construction updates

Phase I of the regeneration and redevelopment of the estate are underway.

☑ Northern boreholes works

Works to the northern boreholes are going to start at the end of August and it is anticipated they will take six to eight weeks to be completed.

For any queries, please speak to our resident liaison officer Kathryn Ridyard using her contact details below.



View of the construction site and jump form

Independent Advice on Regeneration for Ebury Bridge residents



Communities First are your Independent Resident Advisors for Ebury Bridge, providing free independent and confidential advice to tenants and leaseholders on the implications of regeneration plans on your estate. Please feel free to contact Louis at **0300 365 7150** or email ebury@communitiesfirst.uk.com

Your questions

As you know, Kathryn is based in the Resident Liaison Office on site (at the rear of Westbourne and Victoria Houses). She is on hand to answer any questions or concerns you may have. Her office hours are Tuesdays and Thursdays from 10.30am to 2.30pm and Wednesdays from 12.30 to 4.30pm.

Kathryn is contactable from Monday to Friday at kathryn.ridyard@bouygues-uk.com, eburybridge.enquiries@bouygues-uk.com or **07788 922170**

This month's activity on-site

Within the month of August, we expect some other works to be completed as below:



Basement slab

Continuation of Building 7 and 8 basement slabs and removal of props.



Jump form system

Commencement of the jump form system cores for Buildings 7 and 8. The jump form builds the core structure of the buildings. This will proceed three floors above the main structure.



Ground floor slab

Continuation of Building 7 ground floor slab.



What materials are we using?

Regen Ground Granulated Blast furnace Slag (GGBS) is a cement substitute. Using one tonne of Regen in concrete reduces the embodied CO₂ by around 900kg, compared to using one tonne of Portland Cement, and also increases its durability.



Ebury Bridge

📍 Regeneration Base, 15 – 19 Ebury Bridge Road, SW1W 8QX

📞 0800 011 3467

@ eburybridge@westminster.gov.uk

🌐 eburybridge.org

🌐 eburyedge.com

📘 facebook.com/eburybridgerenewal

Westminster City Council

🌐 westminster.gov.uk

Communities First

📞 0300 365 7150

@ enquiries@communitiesfirst.uk.com

You can unsubscribe from this newsletter by emailing eburybridge@westminster.gov.uk quoting your address.

Come and chat with us in the next coffee morning

Coffee mornings are a great way for you to raise any questions you may have about the new homes and the current construction activity on site. Please join us for a chat in the Resident Liaison Office on site (behind Westbourne and Victoria Houses).

Upcoming meetings all between 10am and 1pm in the RLO cabin

- Tuesday 13 September
- Tuesday 8 November
- Tuesday 11 October
- Tuesday 13 December

Don't hesitate to contact Kathryn