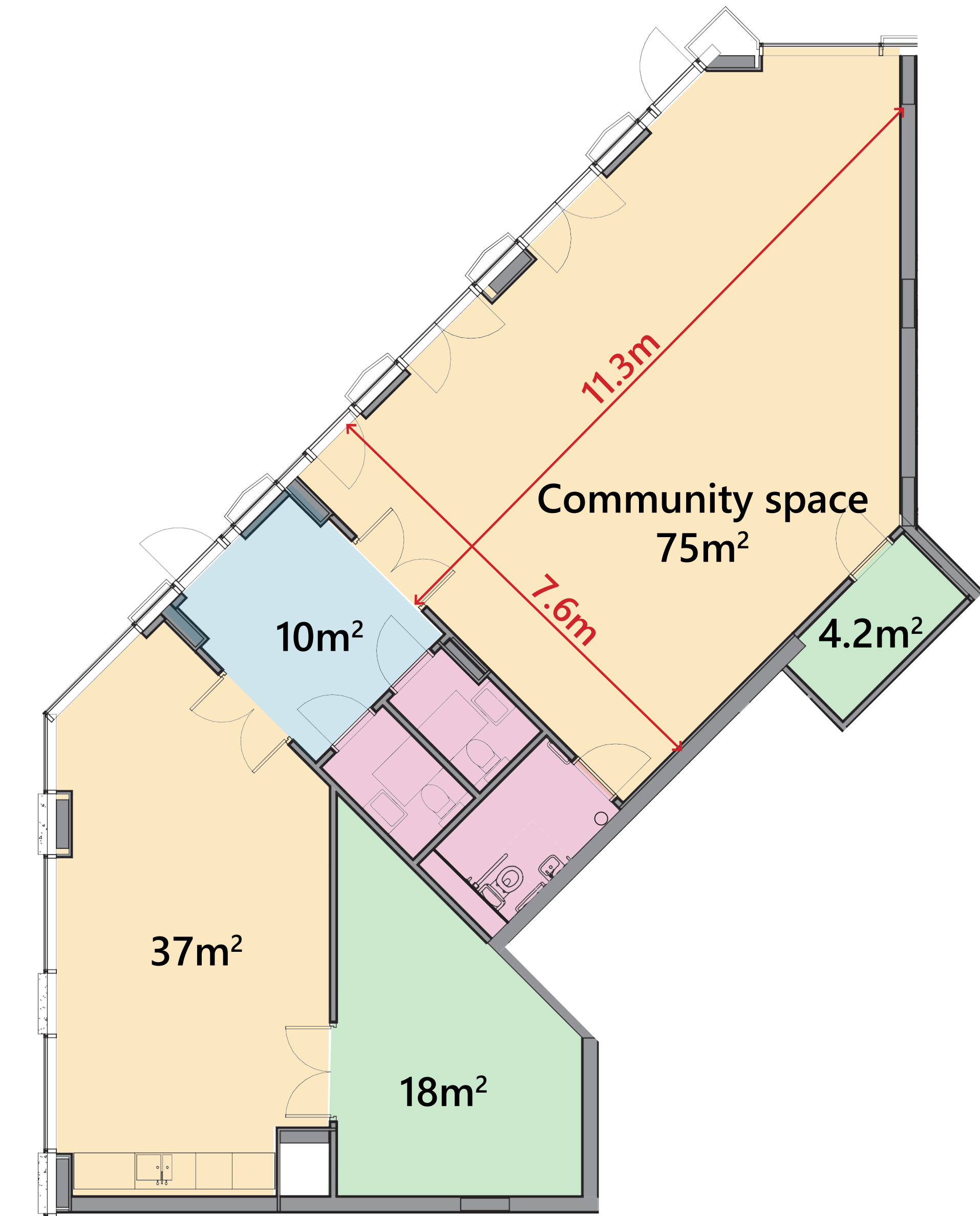


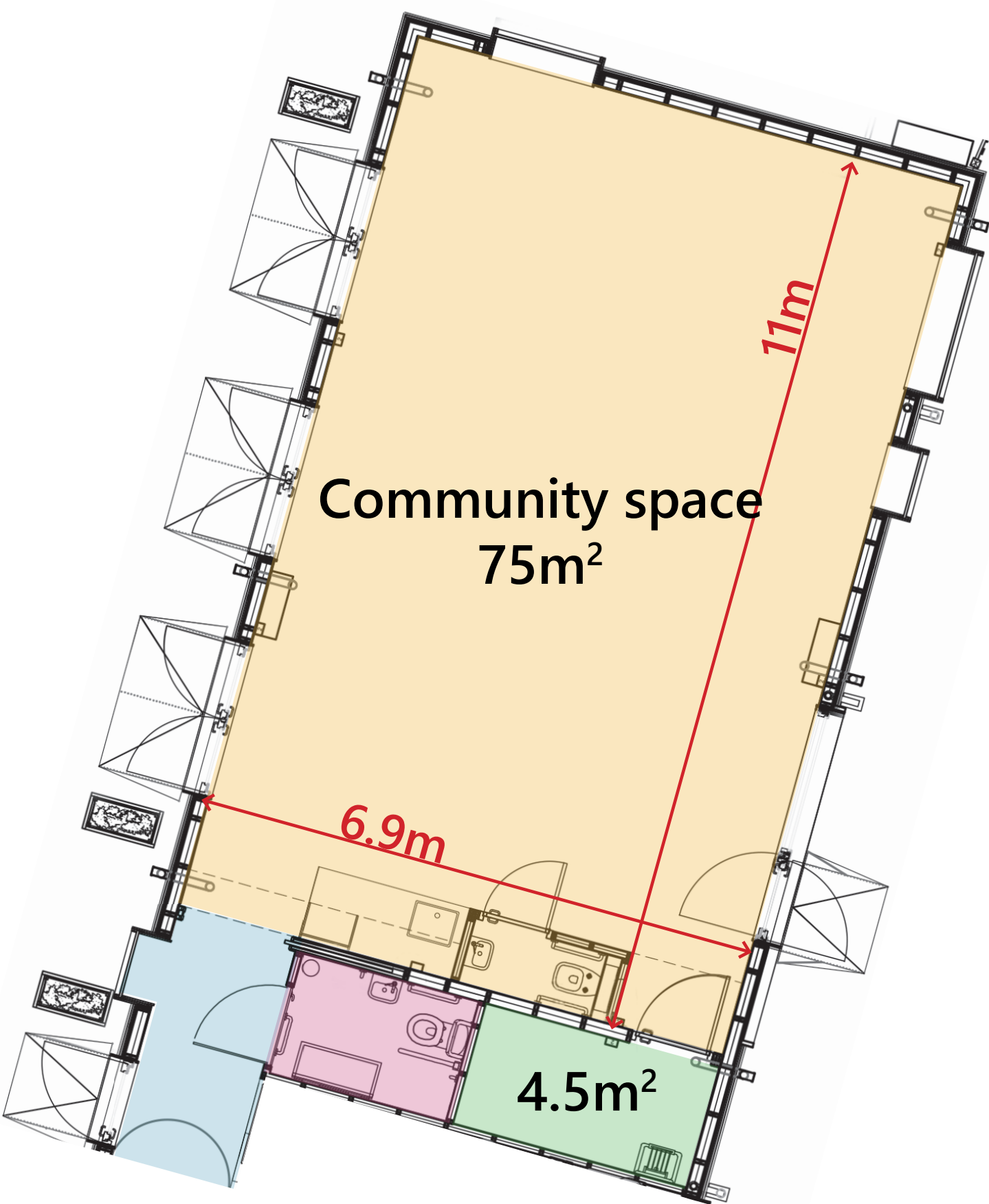
How do you want to use the space?

A place to work	
Homework club	
A place for celebrations	
A place for activities dance, yoga, singing	
Child care facilities	
A place to host a dinner	
Internet and coffee	
Films and music	
Baby morning	

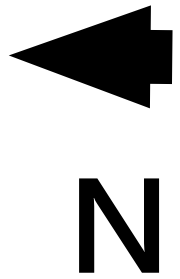
Other, please suggest:



Proposed community space



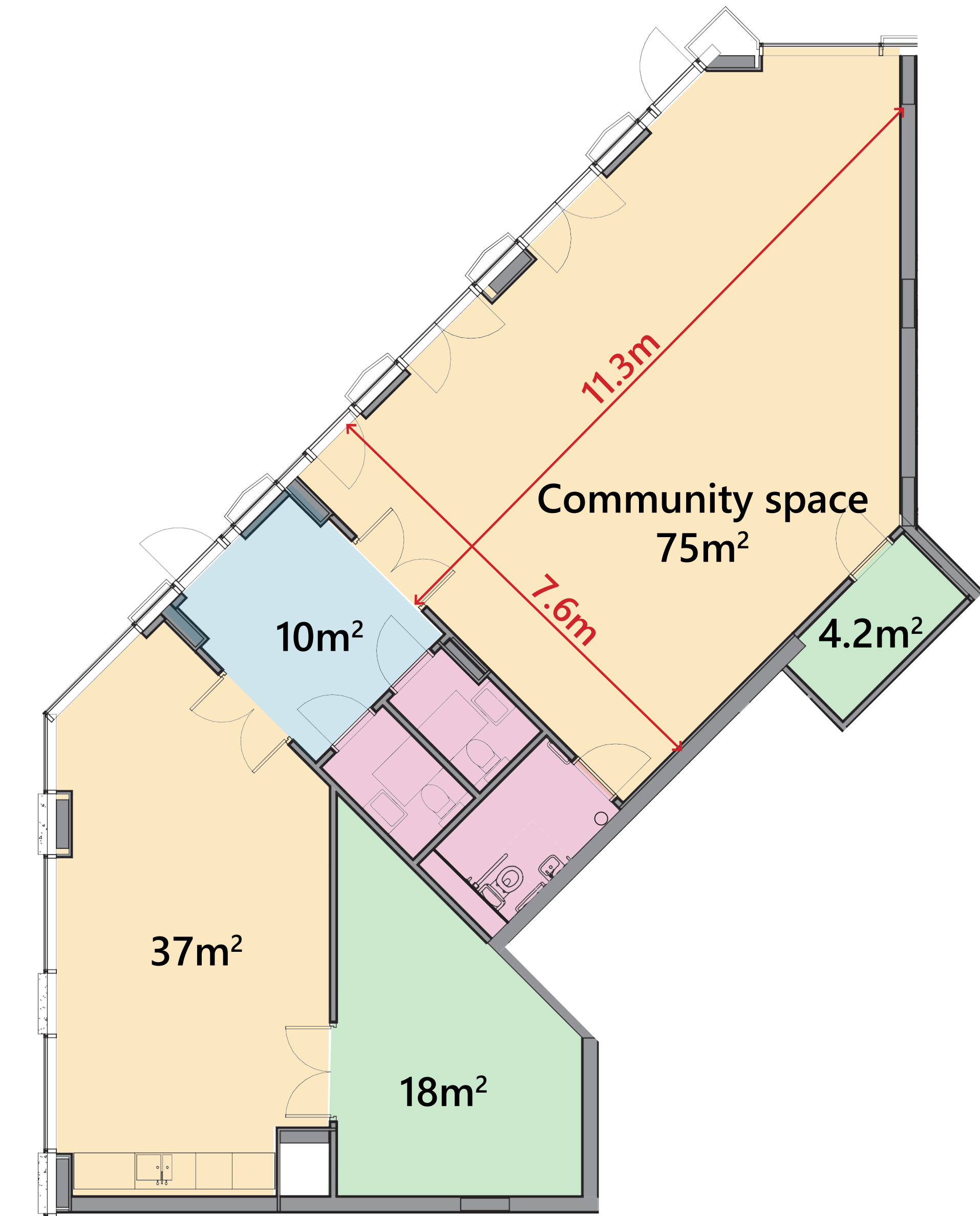
Ebury Edge



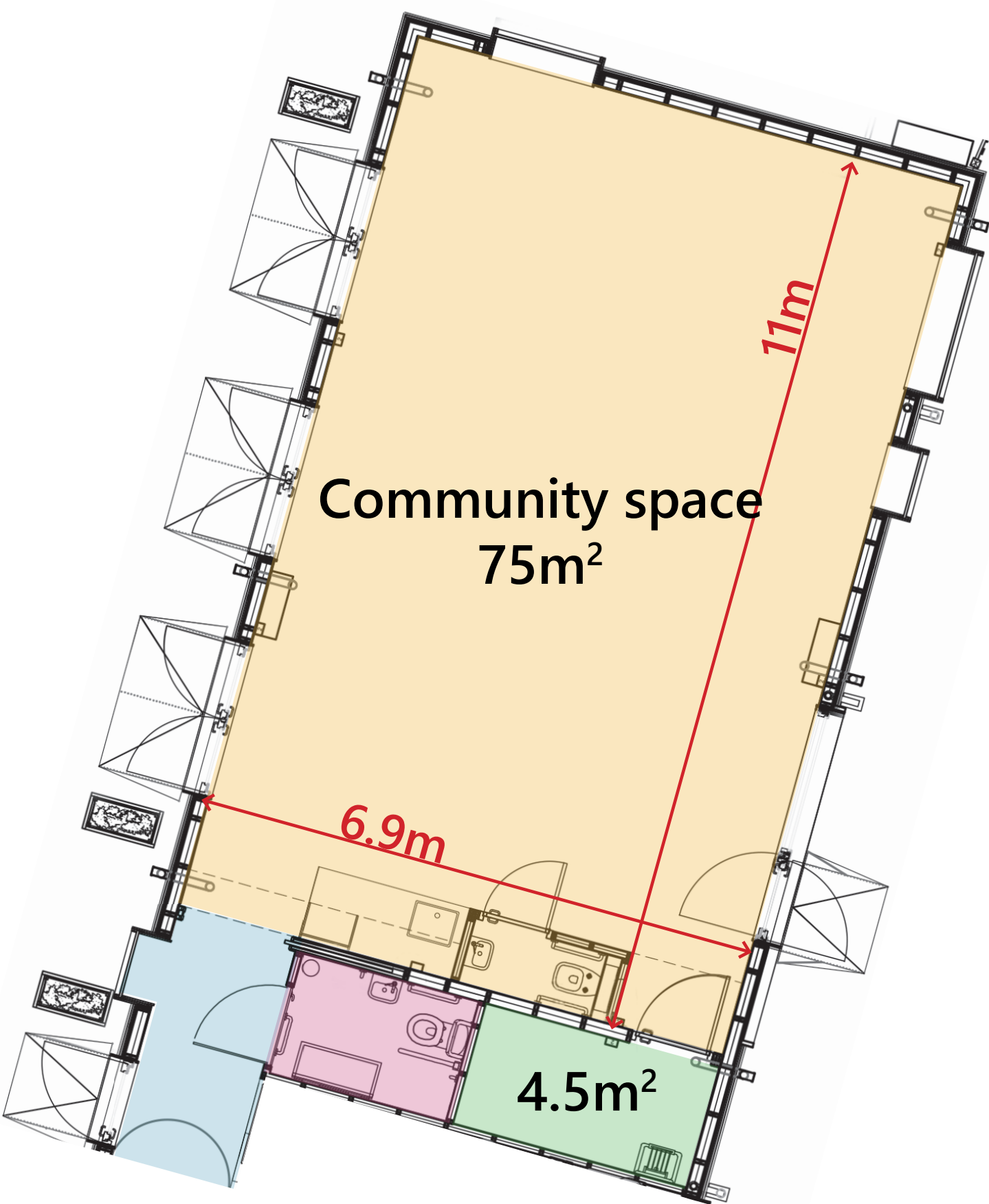
How do you want to use the space?

A place to work	
Homework club	
A place for celebrations	
A place for activities dance, yoga, singing	
Child care facilities	
A place to host a dinner	
Internet and coffee	
Films and music	
Baby morning	

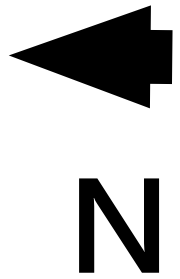
Other, please suggest:



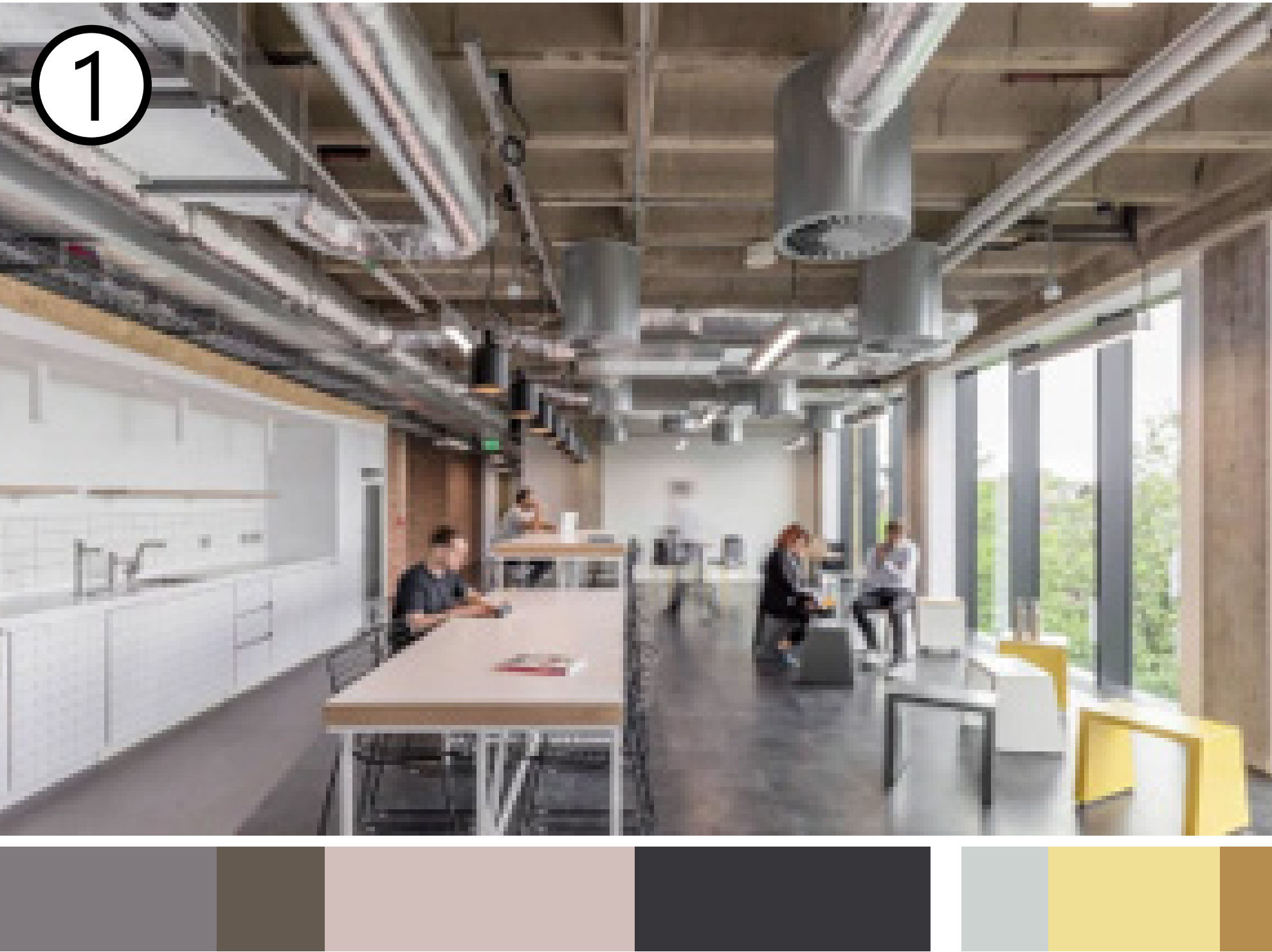
Proposed community space



Ebury Edge



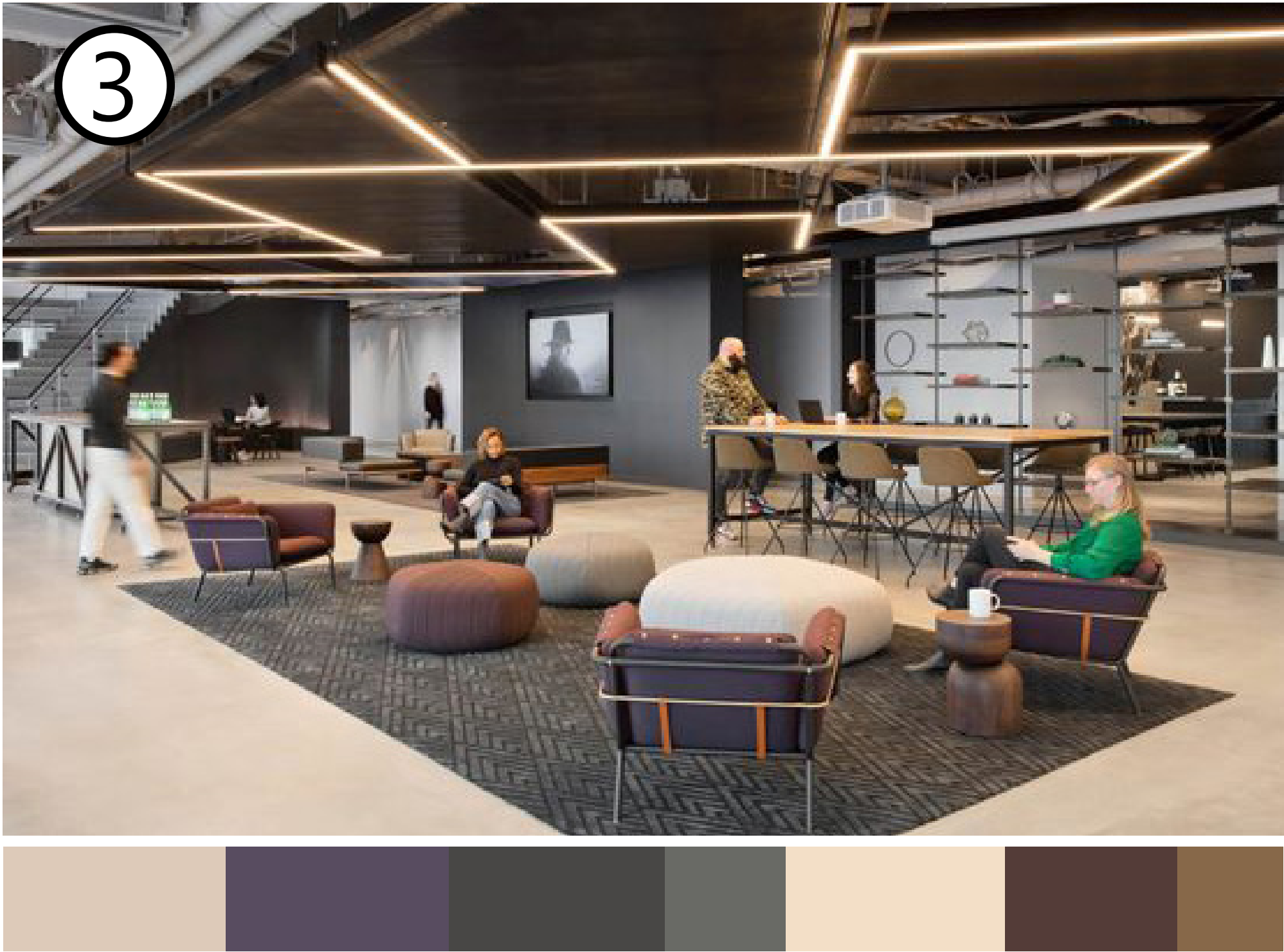
Community space vibe... what do you prefer?



- Mature
- Exposed services
- Natural light
- Raw/warm materials
- Minimalist design
- Kitchenette



- Colourful and bright
- Vibrant
- Playful
- Open
- White and clean
- Activity space



- Modern
- Strip lighting
- Deep colours
- Comfort
- Technology
- Lounge space



- Nature
- Fun
- Creativity
- Bright and bold colours
- Artistic



- Warm
- Natural light
- Wood tones
- Soft colours and textures
- Classic style

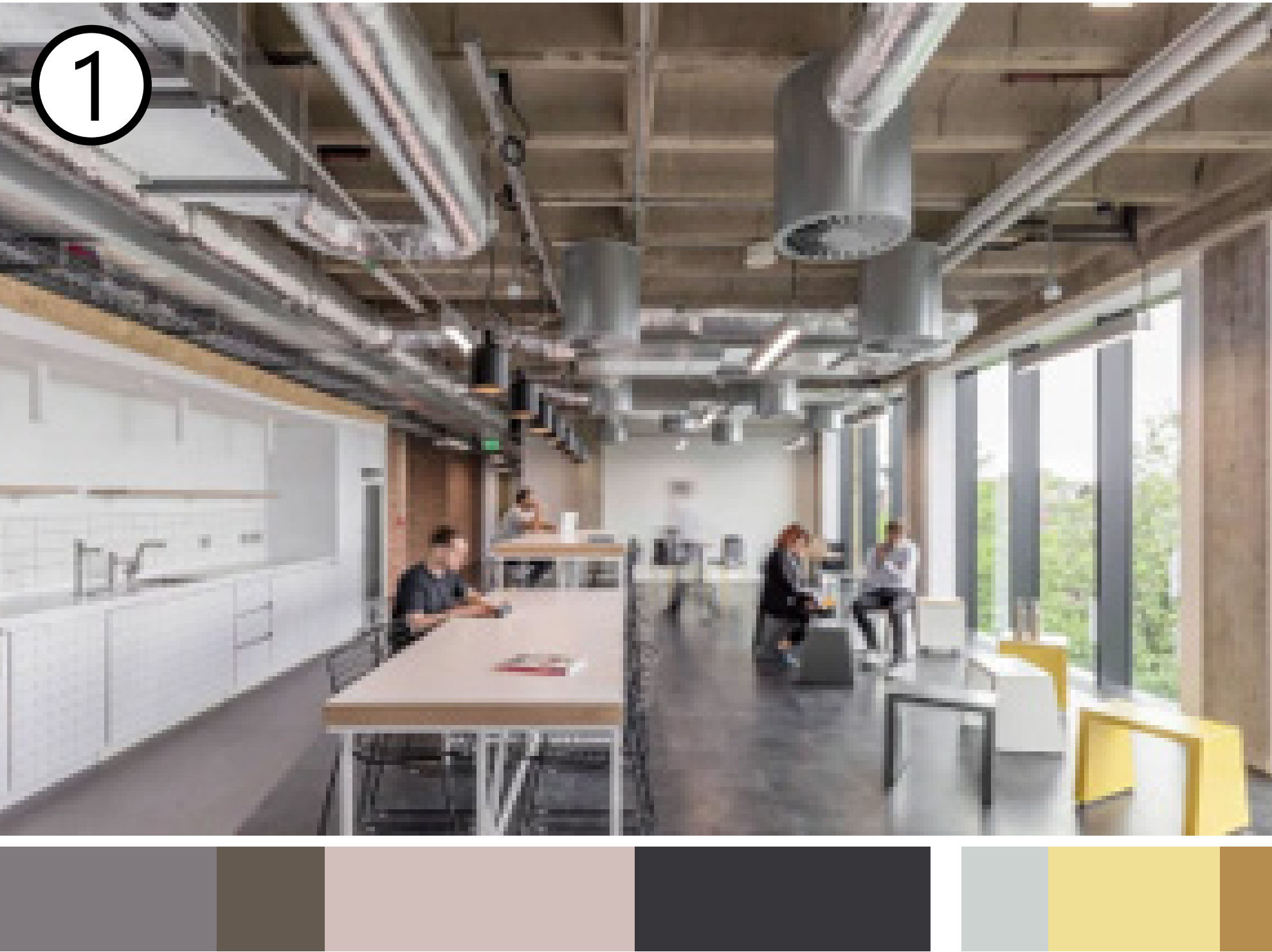


- Youthful
- Games, activities and playspace
- Exposed timber
- Natural light
- Colourful tones

What do you like about the space?

Option 1:
Option 2:
Option 3:
Option 4:
Option 5:
Option 6:

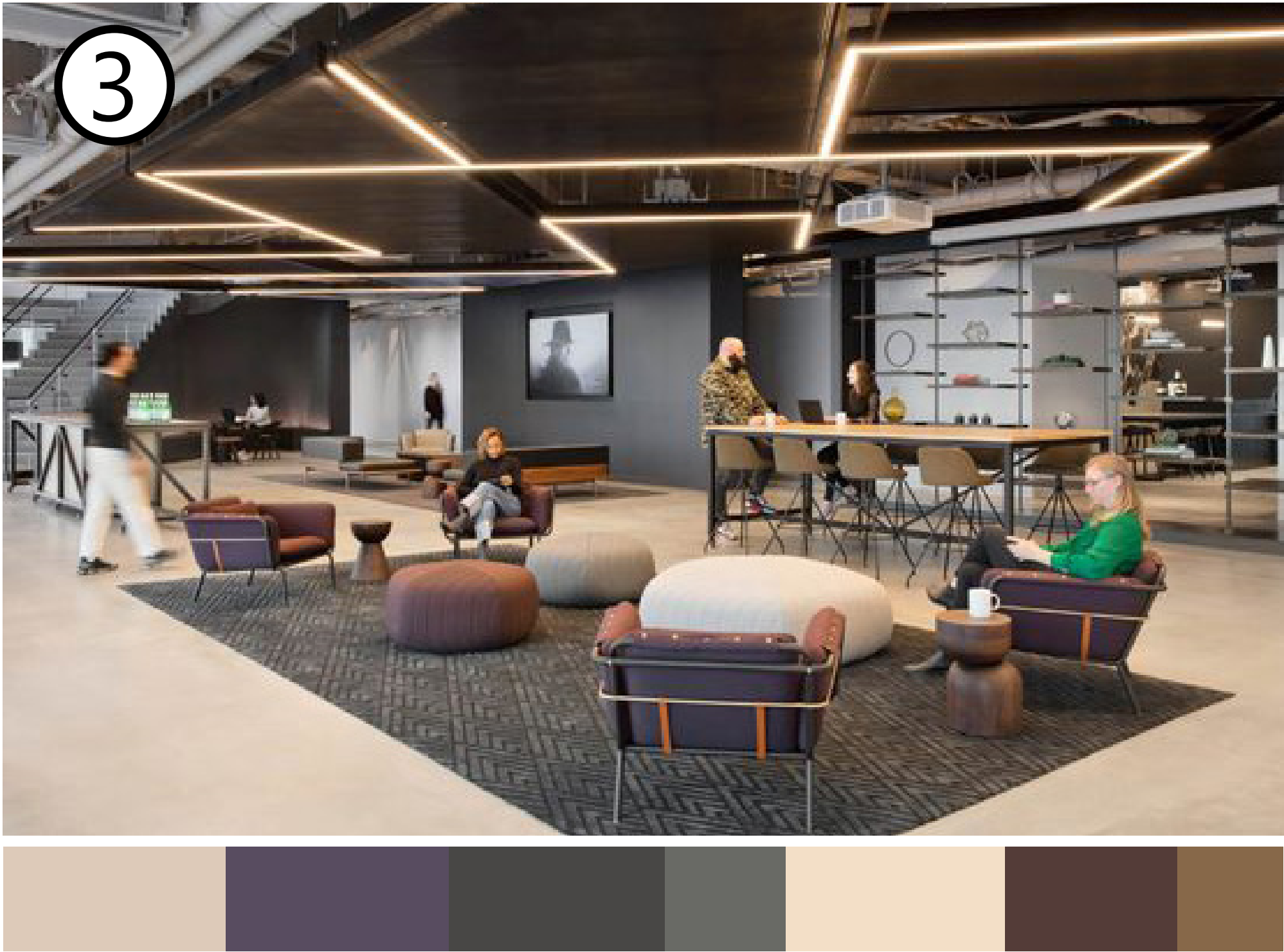
Community space vibe... what do you prefer?



- Mature
- Exposed services
- Natural light
- Raw/warm materials
- Minimalist design
- Kitchenette



- Colourful and bright
- Vibrant
- Playful
- Open
- White and clean
- Activity space



- Modern
- Strip lighting
- Deep colours
- Comfort
- Technology
- Lounge space



- Nature
- Fun
- Creativity
- Bright and bold colours
- Artistic



- Warm
- Natural light
- Wood tones
- Soft colours and textures
- Classic style



- Youthful
- Games, activities and playspace
- Exposed timber
- Natural light
- Colourful tones

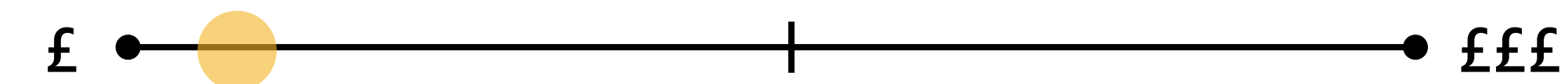
What do you like about the space?

Option 1:
Option 2:
Option 3:
Option 4:
Option 5:
Option 6:

Potential materials...

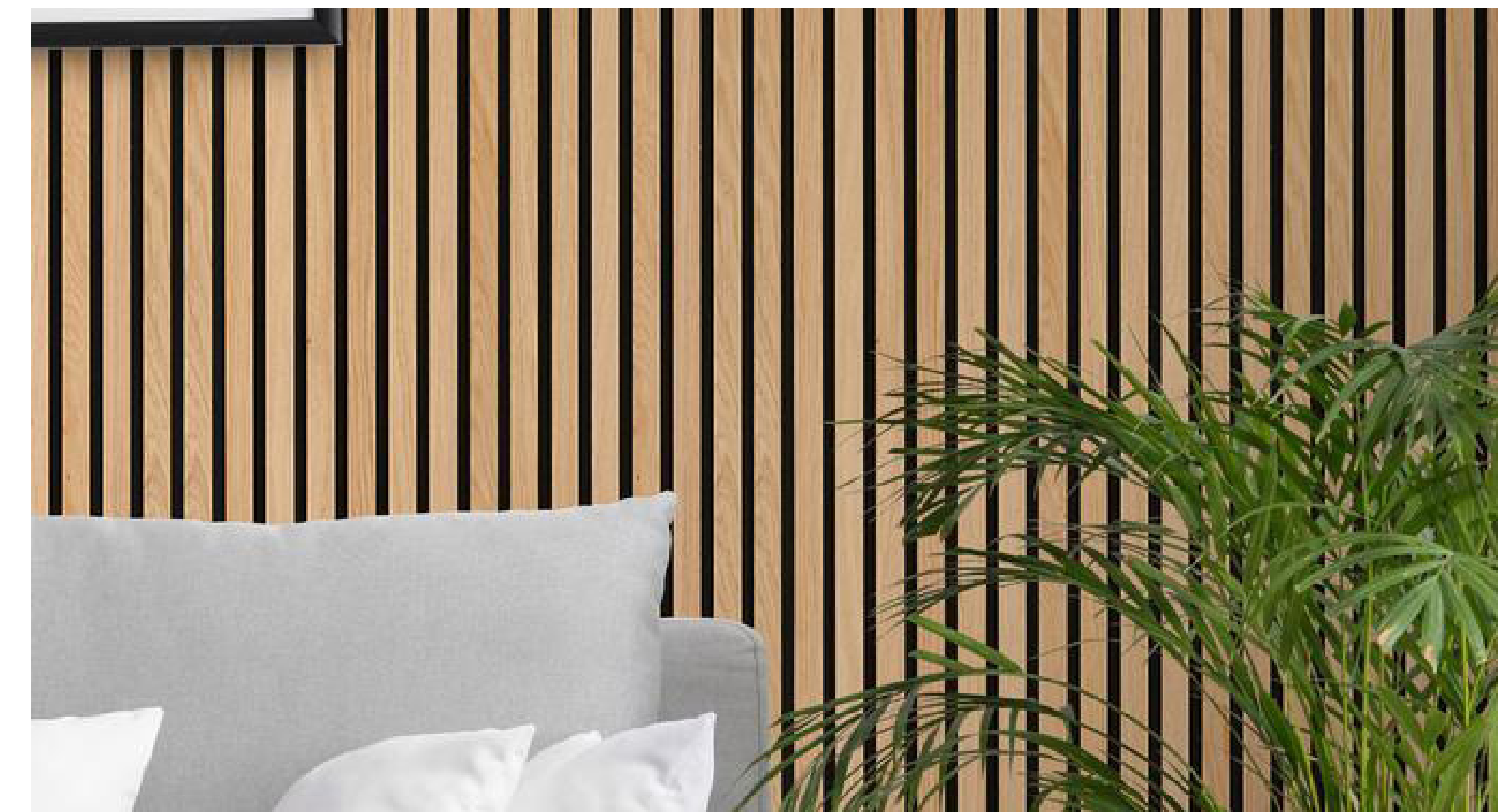


Painted plasterboard walls



- Nice aesthetic
- Works with architecture
- Cost-effective and easy to install

Preferred Zone:



Wood walls

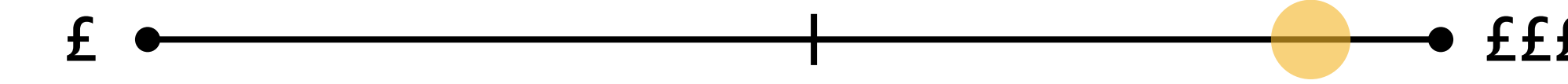


- Durability and longevity
- Sustainability
- Warmth and natural beauty

Preferred Zone:



Wall tiles

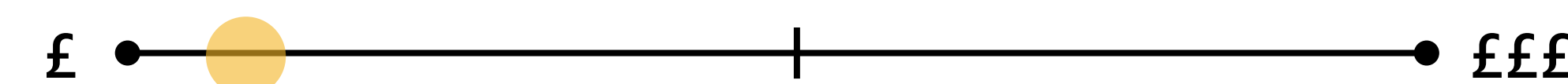


- Easy to clean
- Water-resistant
- Durability

Preferred Zone:



Vinyl flooring



- Versatile - variety of colours & patterns
- Comfort & insulation - cushioned surface
- Cost effective

Preferred Zone:



Wood flooring

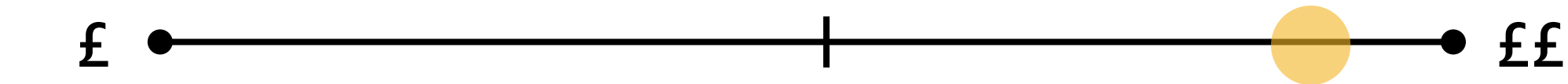


- Easy to maintain
- Hard-wearing
- Timeless style

Preferred Zone:



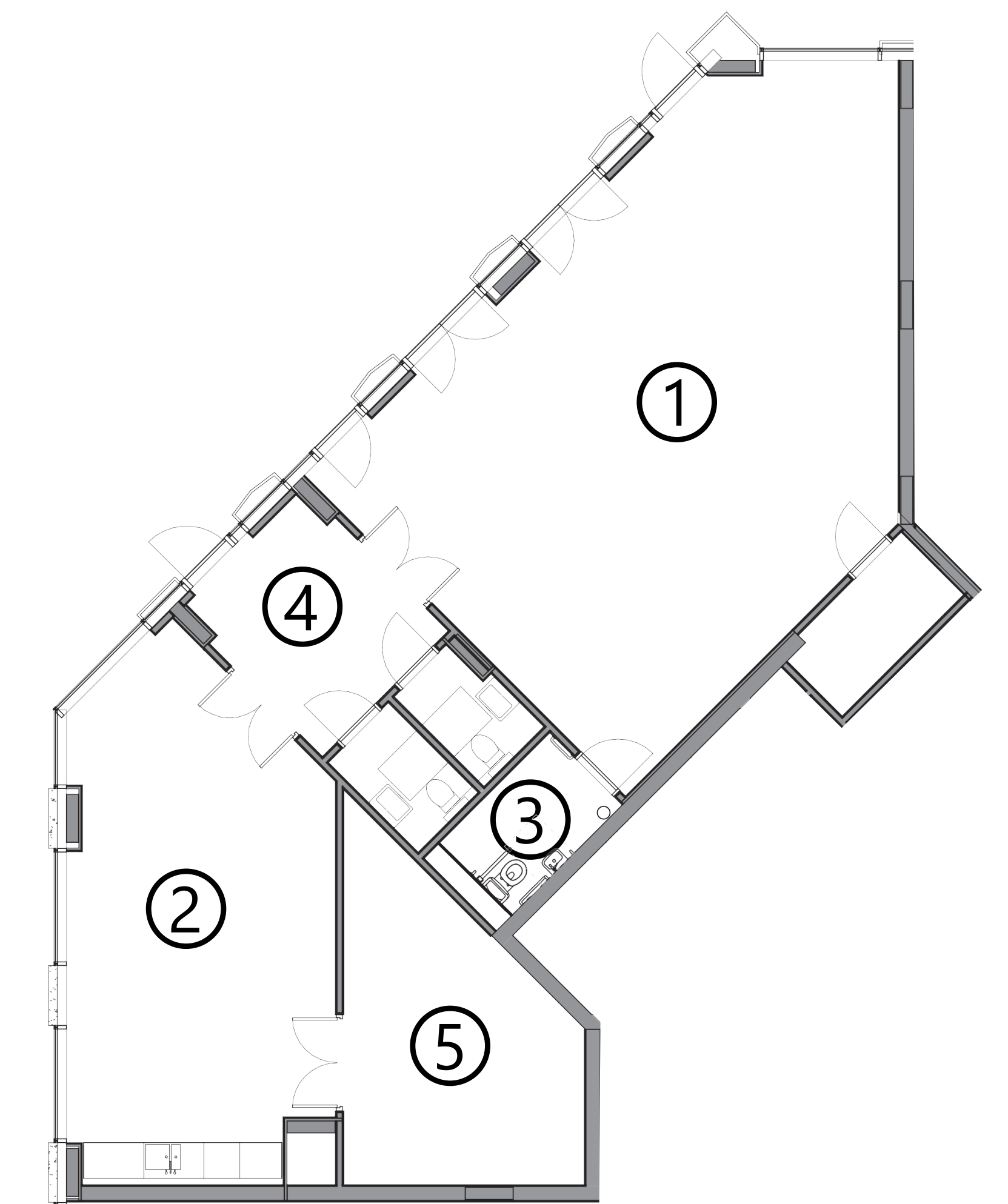
Floor tiles



- Easy to install
- High-end look
- Environmentally friendly material

Preferred Zone:

Community Space Zones:



- 1 - Community space
- 2 - Community space with kitchenette
- 3 - Accessible wc
- 4 - Entrance
- 5 - Storage

Other materials, please suggest:

Potential materials...

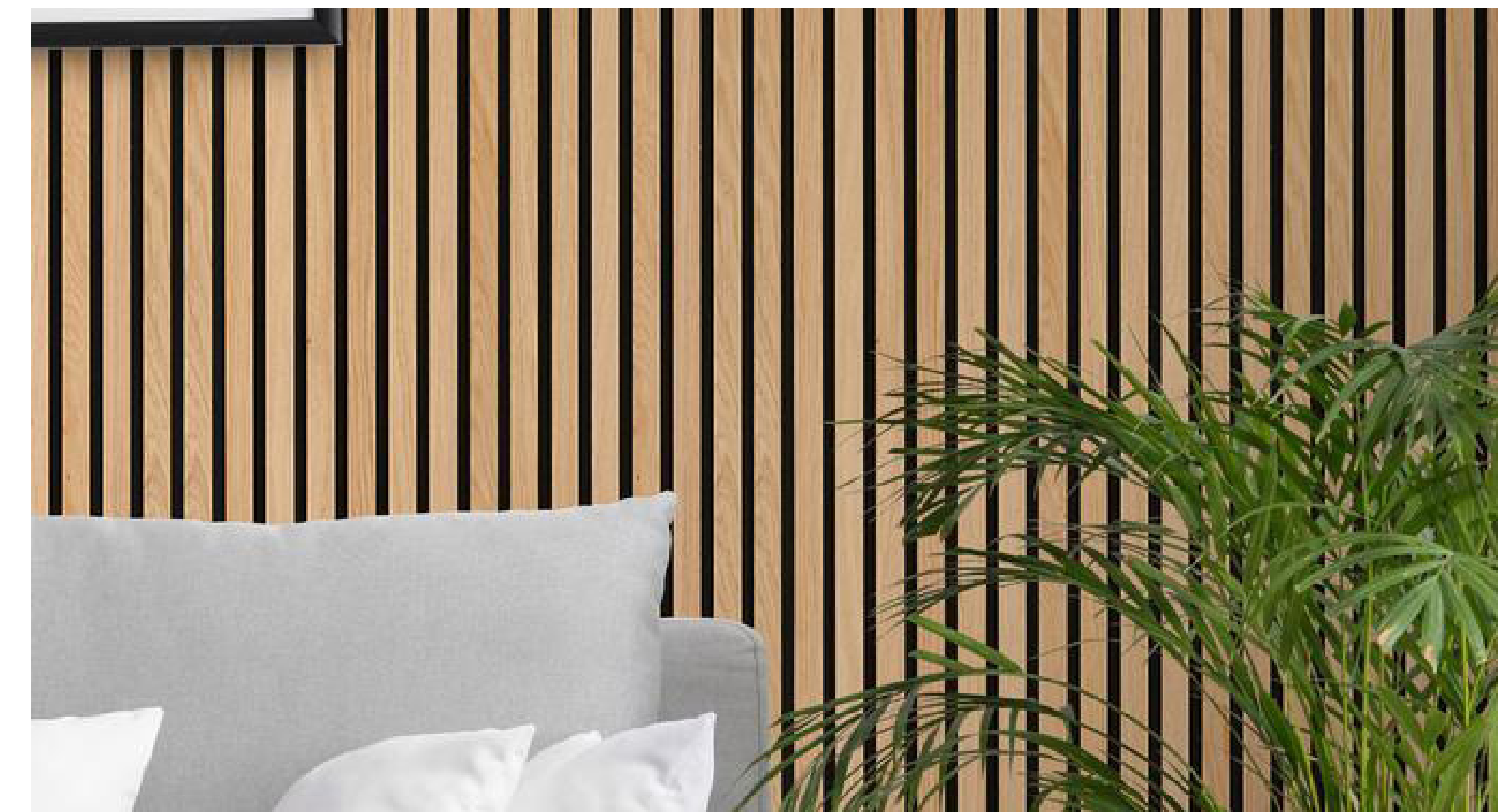


Painted plasterboard walls

£ ● ———— | ———— ● £££

- Nice aesthetic
- Works with architecture
- Cost-effective and easy to install

Preferred Zone:



Wood walls

£ ● ———— | ———— ● £££

- Durability and longevity
- Sustainability
- Warmth and natural beauty

Preferred Zone:



Wall tiles

£ ● ———— | ———— ● £££

- Easy to clean
- Water-resistant
- Durability

Preferred Zone:



Vinyl flooring

£ ● ———— | ———— ● £££

- Versatile - variety of colours & patterns
- Comfort & insulation - cushioned surface
- Cost effective

Preferred Zone:



Wood flooring

£ ● ———— | ———— ● £££

- Easy to maintain
- Hard-wearing
- Timeless style

Preferred Zone:



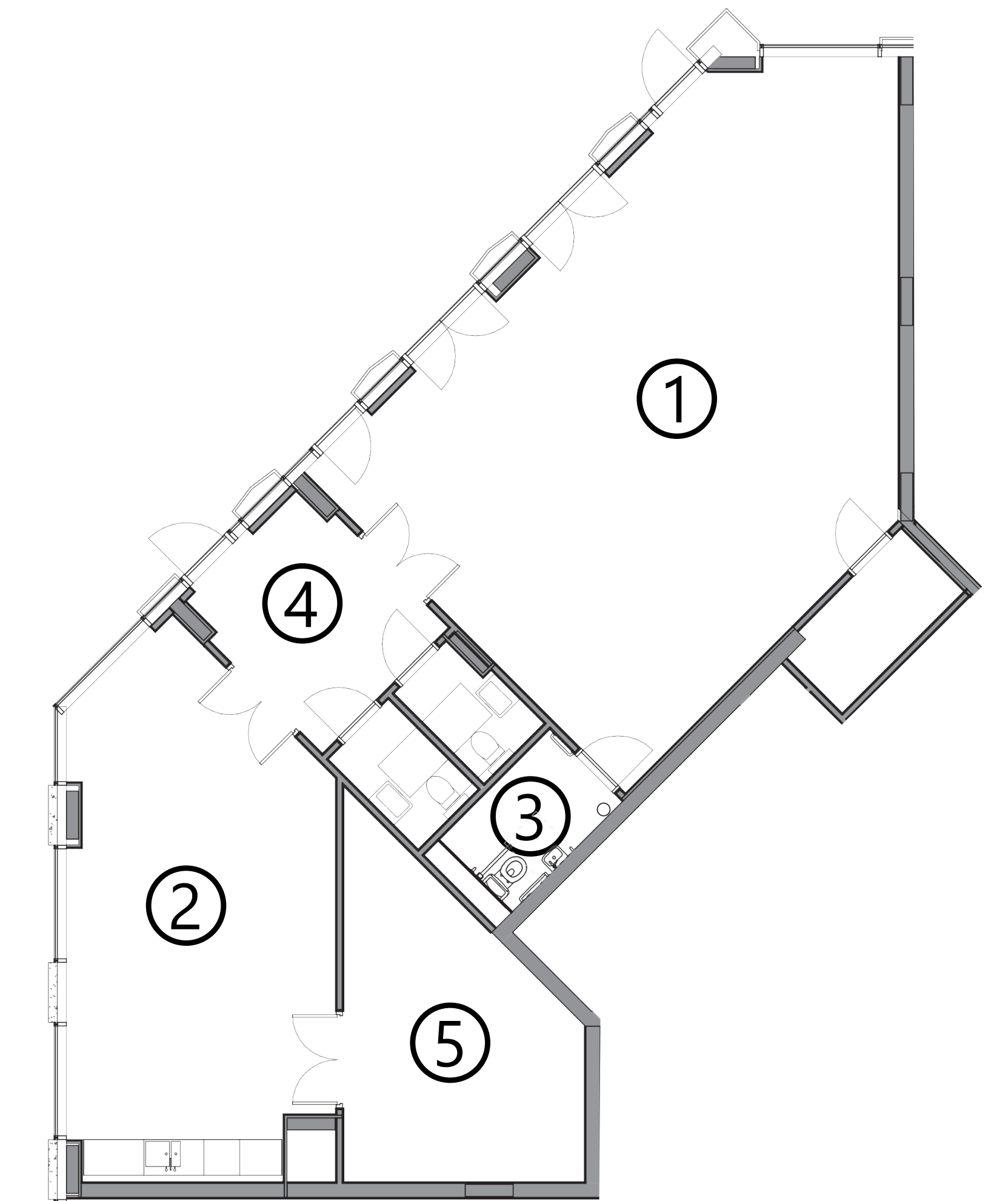
Floor tiles

£ ● ———— | ———— ● £££

- Easy to install
- High-end look
- Environmentally friendly material

Preferred Zone:

Community Space Zones:



- 1 - Community space
- 2 - Community space with kitchenette
- 3 - Accessible wc
- 4 - Entrance
- 5 - Storage

Other materials, please suggest:

Ebury Edge... what we have learnt



How has it been used?

Current ones/regular

- Day Care – Every Wednesday and Thursday, 8am – 4pm
- Tango Classes – Every Thursday, 7.30 pm – 9.30pm
- Citizens Advice – Every second Tuesday of the month, 9am to 12pm
- Yoga classes – From Monday 27 February, 5.30pm for 10 consecutive weeks
- Consultation events

Past activities

- Health and Wellbeing classes/workshops (i.e., natural skin care etc)
- Ceramic workshops
- Art/Art & Crafts market (community courtyard)

Regular

- WCC / Partners Community events (Easter, Summer, Halloween, Christmas, Community BBQs/Street Food)

Occasionally

- Kids' birthday parties
- 1 x Wedding

What do you think has been successful?

What could be better?

Ebury Edge... what we have learnt



How has it been used?

Current ones/regular

- Day Care – Every Wednesday and Thursday, 8am – 4pm
- Tango Classes – Every Thursday, 7.30 pm – 9.30pm
- Citizens Advice – Every second Tuesday of the month, 9am to 12pm
- Yoga classes – From Monday 27 February, 5.30pm for 10 consecutive weeks
- Consultation events

Past activities

- Health and Wellbeing classes/workshops (i.e., natural skin care etc)
- Ceramic workshops
- Art/Art & Crafts market (community courtyard)

Regular

- WCC / Partners Community events (Easter, Summer, Halloween, Christmas, Community BBQs/Street Food)

Occasionally

- Kids' birthday parties
- 1 x Wedding

What do you think has been successful?

What could be better?

Potential Non-Residential uses – Masterplan



B5

1 – Office space

B1

2 – Community space
3 – Convenience
4 – Pharmacy

B2

5 – Flexible retail space
6 – Wine bar

B3

7 – Restaurant
8 – Flexible retail space

B7

9 – Management Hub

B4

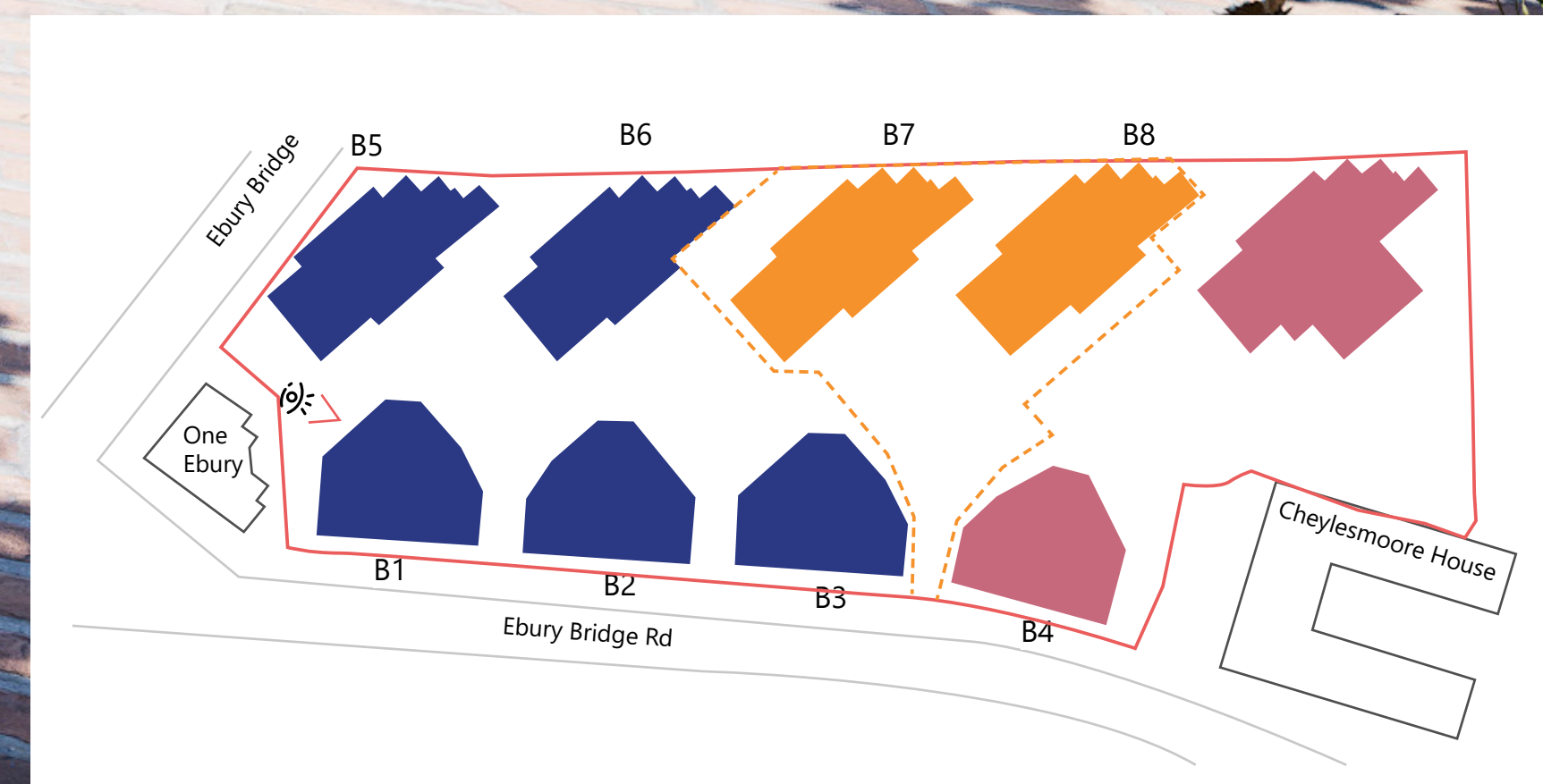
10 – Estate agent/
Beauty
11 – Café/Interiors/
Bridal

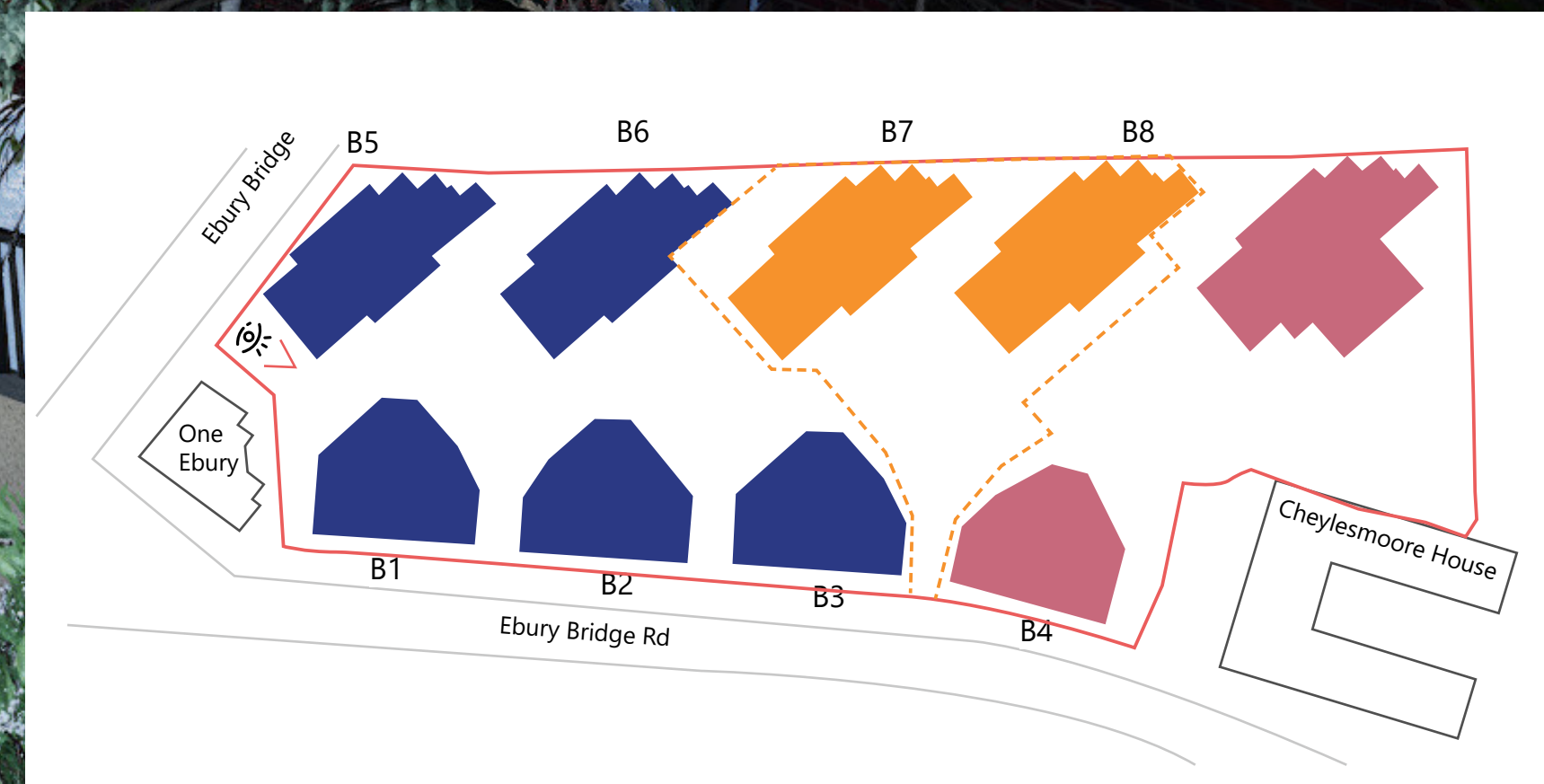
B9

12 – Fitness
13 – Café/juice bar
14 – Nursery

Phase 2 Landscape Design

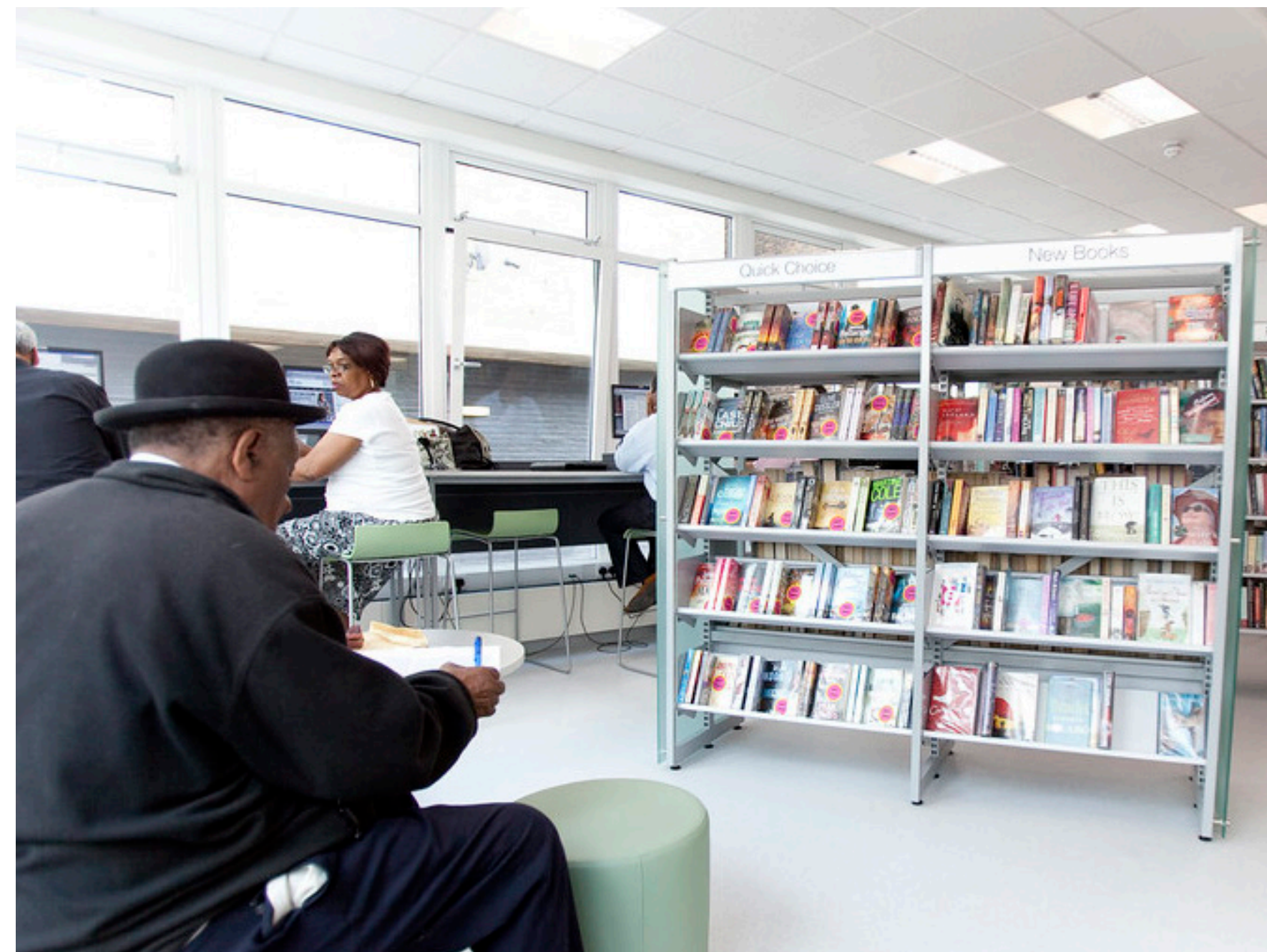






Other community spaces in Westminster...

Church Street Community Library



Uses & Activities:

- Advocacy/representation
- Arts and cultural activities
- Education/Play (children/young people)
- Education/Training (adults)
- Getting people into work
- Group outings and social activities
- Health information and signposting
- Healthy eating and fitness
- Mental health and wellbeing

Dryburgh Hall



Uses & Activities:

- Large multi-use community hall available for private or social functions as well as two small meeting rooms.
- Open plan kitchen
- Suitable for public events and social functions.
- Accessible toilets
- Open plan kitchen
- Wheelchair accessible

Pimlico Library



Uses & Activities:

- Business information point
- Computers - book a PC
- Free wifi
- Large number of books
- Photocopying, printing and scanning
- Reading group
- Room for hire

Victoria Library



Uses & Activities:

- Computers - book a PC
- Community noticeboard
- Employment advice sessions
- Free wifi
- Photocopying, printing and scanning
- Reading group
- Rooms for hire
- Study area



Thank you

Please let us know your thoughts and ideas about the Community Space by completing a feedback form and handing it to a member of staff.

If you have any questions or concerns, a project team member will be happy to assist.

We will have a second workshop next month to further discuss the Community Space design. You can also view the historic design consultation boards from previous exhibitions on our Ebury Bridge website: www.eburybridge.org

We will notify residents of the next workshop or exhibition whereby there will be further opportunity to express any views, comments and support.

It's easy to contact us if you have any comments, questions or concerns:

Visit our information website at eburybridge.org
Phone us for free on **0800 011 3467**
Email us at eburybridge@westminster.gov.uk

Visit the Regeneration Base at
**15–19 Ebury Bridge
Road, London, SW1W 8QX.**

Visit the Ebury Bridge Studio at
**9 Ebury Bridge Road,
London, SW1W 8QX**

