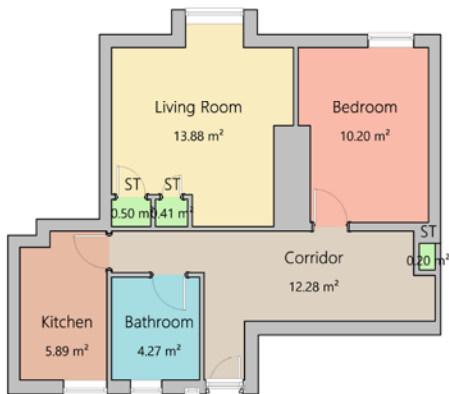


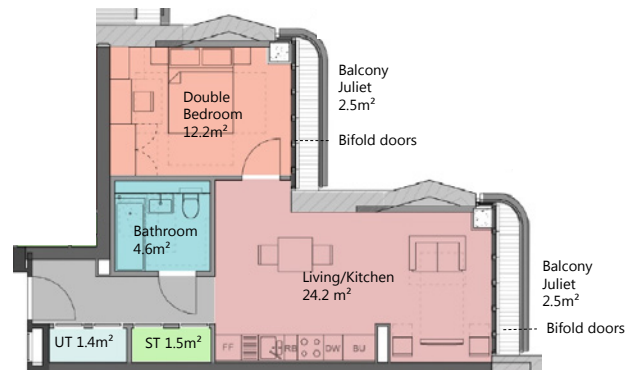
EBURY BRIDGE PROPOSED HOME LAYOUTS

1 Bed existing vs. proposed



1 Bedroom home Dalton House

- Internal area: $51\text{m}^2 + 0\text{m}^2$
Private balcony = 51m^2 (average 43m^2)
- Window to wall ratio: **27%**
- Dual aspect to living space: **no**
(however separate dual aspect)
- Floor to ceiling height: **2.3m to 2.5m**
- Storage: **0.9m^2**



1 Bedroom home proposed

- Internal area: $50\text{m}^2 + 5\text{m}^2$
Private balcony = 55m^2
- Window to wall ratio: **40%**
- Dual aspect to living space: **north east and south east**
- Floor to ceiling height: **2.4m to 2.6m**
- Storage: **1.5m^2**

2 Bed existing vs. proposed



2 Bedroom home Rye House

- Internal area: $78\text{m}^2 + 0\text{m}^2$
Private balcony = 78m^2 (average 76m^2)
- Window to wall ratio: **24%**
- Dual aspect to living space: **no**
(however separate dual aspect)
- Floor to ceiling height: **2.4m to 2.5m**
- Storage: **2.6m^2**



2 Bedroom home proposed

- Internal area: $76\text{m}^2 + 7\text{m}^2$
Private balcony = 83m^2
- Window to wall ratio: **30%**
- Dual aspect to living space: **north east and north west**
- Floor to ceiling height: **2.4m to 2.6m**
- Storage: **2m^2**

3 Bed existing vs. proposed



3 Bedroom home Doneraile

- Internal area: 88m² + 0m²
Private balcony = **88m²** (average 79m²)
- Window to wall ratio: **26%**
- Dual aspect to living space: **no**
(however separate dual aspect)
- Floor to ceiling height: **2.4m to 2.5m**
- Storage: **0.7m²**



3 Bedroom home proposed

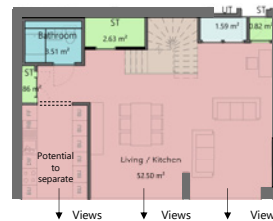
- Internal area: 86m² + 8m²
Private balcony = **94m²**
- Window to wall ratio: **40%**
- Dual aspect to living space: **north east and south east**
- Floor to ceiling height: **2.4m to 2.6m**
- Storage: **2.5m²**

4 Bed existing vs. proposed

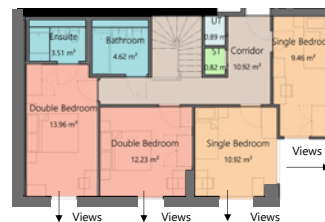


4 Bedroom home Westbourne House

- Internal area: 96m² + 0m²
Private balcony = **96m²**
- Window to wall ratio: **22%**
- Dual aspect to living space: **potential**
- Floor to ceiling height: **2.4m to 2.5m**
- Storage: **1.86m²**



4 Bedroom home first floor



4 Bedroom home ground floor

4 Bedroom home proposed

- Internal area: 99m² + 9m²
Private garden = **108m²**
- Window to wall ratio: **40%**
- Dual aspect to living space: **south west and south east**
- Floor to ceiling height: **2.4m to 2.6m**
- Storage: **3m²**

Contact us

We'd be happy to assist with any questions or concerns about the renewal. You can contact us by:

📞 Calling Freephone: **0800 011 3467**

✉️ Emailing **eburybridge@westminster.gov.uk**

📍 Visit the **Regeneration Base** at **15 – 19 Ebury Bridge Road, London, SW1W 8QX**
Hours: Monday to Friday, 10am to 4pm. Late opening: Wednesdays, 5pm to 7pm