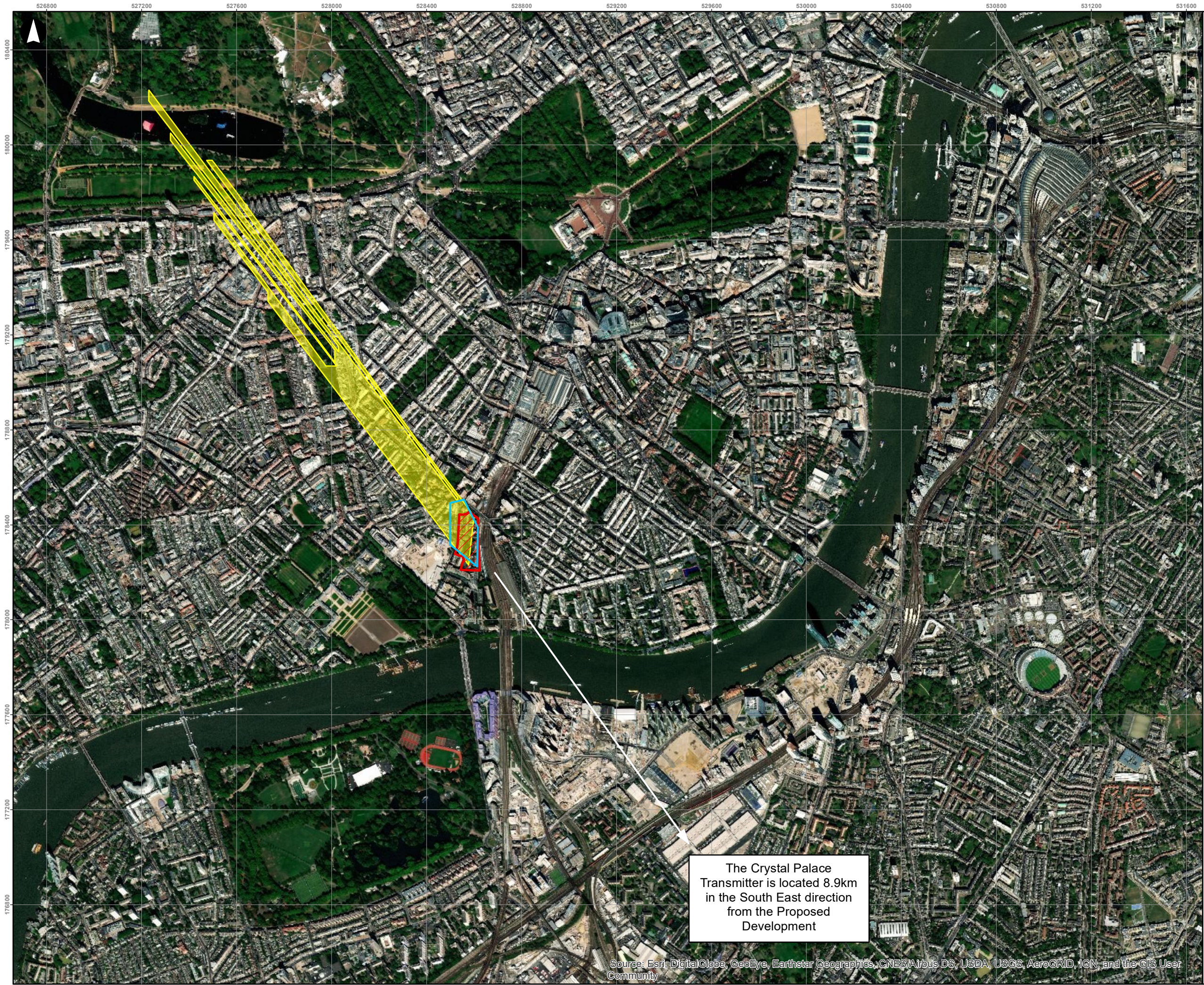


Appendix G

Electromagnetic interference



Notes
1. To be read in conjunction with Ebury Bridge Renewal Environmental Statement Electromagnetic Interference (EMI) topic chapter

- Legend**
- Proposed Development Site
 - Astra Satellite Signal Shadow
 - Crystal Palace Transmitter Signal Shadow

A	24/03/2020	ER	AOR	AT
Revision	Date	By	Chkd	Appd

Metres

0

205

410

820

ARUP

13 Fitzroy Street
London W1T 4BQ
Tel +44 20 7636 1531 Fax +44 20 7580 3924
www.arup.com

Client

City of Westminster

Job Title

Ebury Bridge Renewal

Drawing Title

TV Transmitter and Satellite Signal Shadows

Scale at A3

1:15,000

Job No

257461-95

Drawing Status

For Issue

Drawing No

OVE-EBR-DRW-001

Revision

A

The Crystal Palace Transmitter is located 8.9km in the South East direction from the Proposed Development